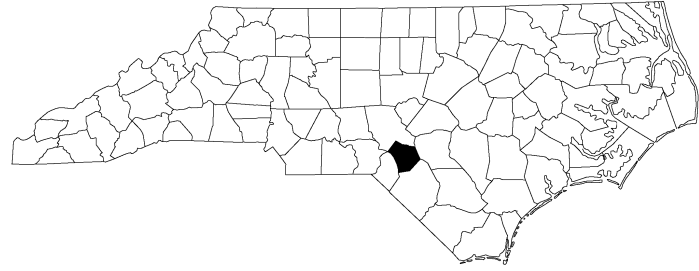


**CONTRACT: TIP PROJECT: BO-2408I**

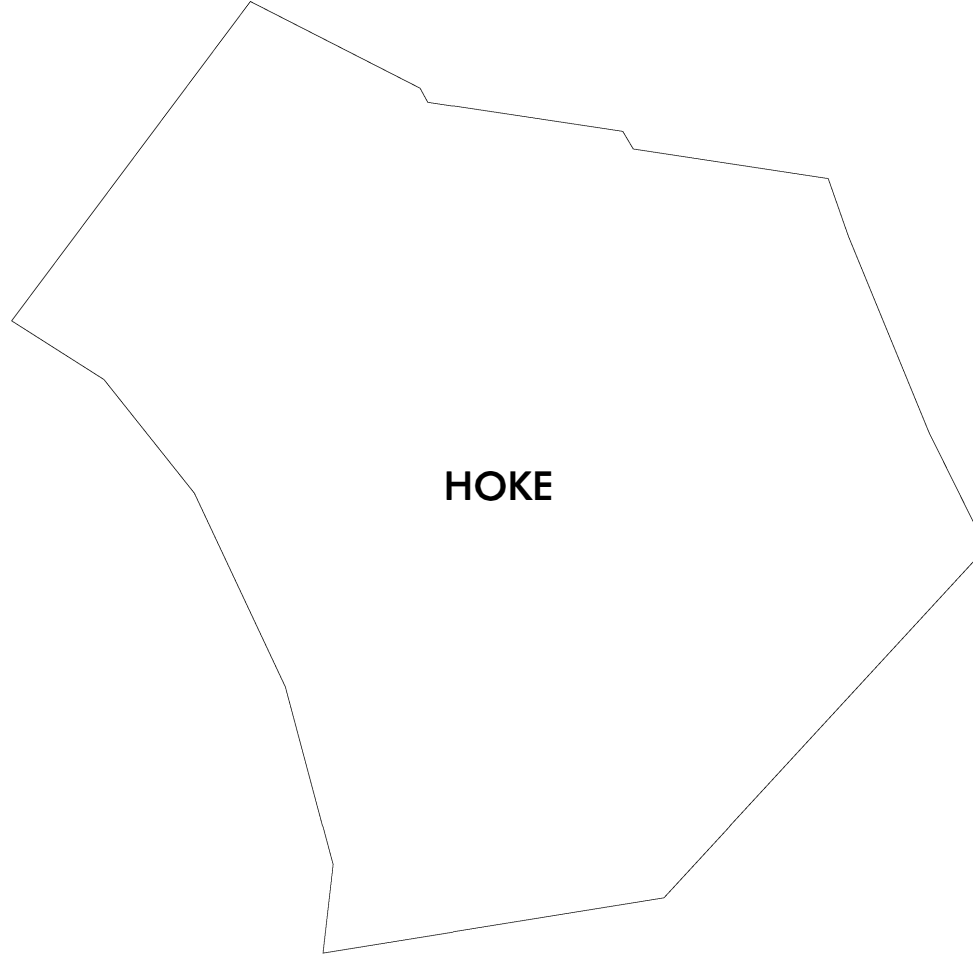
STATE OF NORTH CAROLINA  
DIVISION OF HIGHWAYS



***DIVISIONWIDE***

**LOCATION: HOKE COUNTY**

**TYPE OF WORK: CURB RAMP INSTALLATIONS**



STATE	STATE PROJECT REFERENCE NO.	SHEET NO.	TOTAL SHEETS
N.C.	<b>BO-2408I</b>	1	19
STATE PROJ. NO.	F.A. PROJ. NO.	DESCRIPTION	
50937.1.2	5093701	PE	
50937.3.11	5093711	CON	

Prepared In the Office of:  
**DIVISION OF HIGHWAYS**  
1000 Birch Ridge Dr., Raleigh NC, 27610

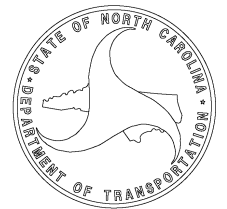
2024 STANDARD SPECIFICATIONS

RIGHT OF WAY DATE:

**GREG DAVIS**  
PROJECT ENGINEER

LETTING DATE:  
2/10/2026

**NV5**  
PROJECT DESIGN ENGINEER



ADA SUMMARY OF QUANTITIES - TOTALS

TIP Number:	BO-2408I
PE WBS Number:	50937.1.2
Con WBS Number:	50937.3.11
County:	Hoke

Sheet No.
2

TIP Number	County	Municipality	0000100000-N (LS) Mobilization	4457000000-N (LS) Temporary Traffic Control	2752000000-E (LF) Remove And Replace 2'-6" Concrete Curb & Gutter	2738000000-E (SY) Remove And Replace 4" Concrete Sidewalk	2738000000-E (SY) Remove 4" Concrete Sidewalk	2845000000-N (EA) Adjustment of Meter Boxes or Valve Boxes	2612500000-N (EA) Remove and Replace Concrete Curb Ramps	2759000000-N (EA) Remove Concrete Curb Ramps
BO-2408G	Hoke	Unincorporated Areas	1	1	15	15	6	1	21	1
<b>Total</b>			<b>1</b>	<b>1</b>	<b>15</b>	<b>15</b>	<b>6</b>	<b>1</b>	<b>21</b>	<b>1</b>

ADA SUMMARY OF QUANTITIES - UNINCORPORATED AREAS - HOKE COUNTY

Municipality:	Unincorporated Areas
Project Number:	BO-2408I
PE WBS Number:	50937.1.2
Con WBS Number:	50937.3.11
County:	Hoke

Sheet No.
3

Ramp ID	Inset Map Number	Route 1	Route 2	2752000000-E (LF) Remove And Replace 2'-6" Concrete Curb & Gutter	2738000000-E (SY) Remove And Replace 4" Concrete Sidewalk	2738000000-E (SY) Remove 4" Concrete Sidewalk	2845000000-N (EA) Adjustment of Meter Boxes or Valve Boxes	2612500000-N (EA) Remove and Replace Concrete Curb Ramps	2759000000-N (EA) Remove Concrete Curb Ramps	Improvement Type
1456	1	SR-1666 (Whitetail Ct)	SR-1665 (Fishers Cv)					1		Type 1C - 848.06
1454	2	SR-1664 (Yellowfoot Dr)	SR-1653 (Blackhawk Ln)					1		Type 1A - 848.06
1455	2	SR-1664 (Yellowfoot Dr)	SR-1653 (Blackhawk Ln)					1		Type 1A - 848.06
1452	3	SR-1664 (Yellowfoot Dr)	SR-1665 (Fishers Cv)					1		Type 1C - 848.06
1453	3	SR-1664 (Yellowfoot Dr)	SR-1665 (Fishers Cv)					1		Type 1D - 848.06
1449	4	SR-1664 (Yellowfoot Dr)	SR-1654 (Feathers Ln)					1		Type 1A - 848.06
1450	4	SR-1664 (Yellowfoot Dr)	SR-1654 (Feathers Ln)					1		Type 1A - 848.06
1451	4	SR-1664 (Yellowfoot Dr)	SR-1654 (Feathers Ln)					1		Type 1A - 848.06
1447	5	SR-1311 (Mockingbird Hill Rd)	SR-1653 (Blackhawk Ln)					1		Type 1A - 848.06
1448	5	SR-1311 (Mockingbird Hill Rd)	SR-1653 (Blackhawk Ln)					1		Type 1A - 848.06
1	6	US-401 (Fayetteville Rd)	Club Pond Rd				1	1		Type 1A - 848.06
1464	7	SR-1745 (Northview Dr)	SR-1806 (St Johns Loop)					1		Type 1C - 848.06
1465	7	SR-1745 (Northview Dr)	SR-1806 (St Johns Loop)					1		Type 1C - 848.06
<b>Sub-Total</b>				<b>0</b>	<b>0</b>	<b>0</b>	<b>1</b>	<b>13</b>	<b>0</b>	

\*Contingency line item amount provided for adjustments outside of curb ramp pay limits.

Notes: (1) ADA quantity totals are provided on the project 'ADA SUMMARY OF QUANTITIES - TOTALS' page. (2) Construct in accordance with Section 848. Detectable warnings shall be of one of the following materials: engineered plastics, rubber, or composite tile. Additionally, warnings shall be applied directly to the curb ramps by incorporating into the concrete of the curb ramps unless otherwise approved by the Engineer. Surface mounted rubber mats, brick, steel and stamped concrete pavers will not be accepted.

ADA SUMMARY OF QUANTITIES - UNINCORPORATED AREAS - HOKE COUNTY

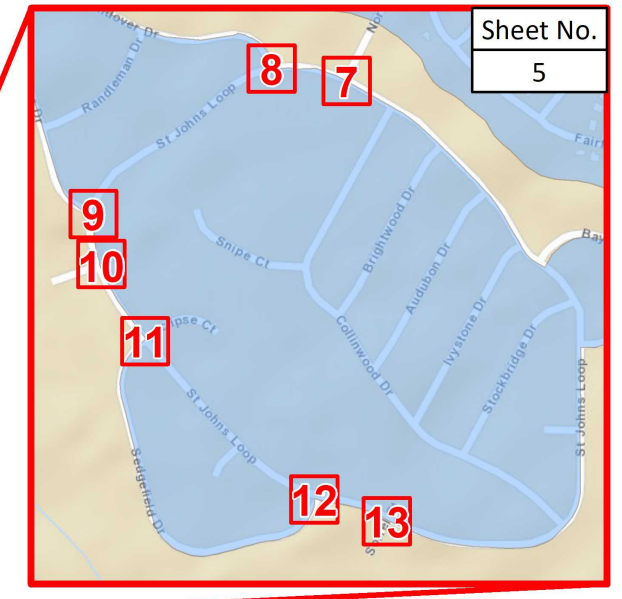
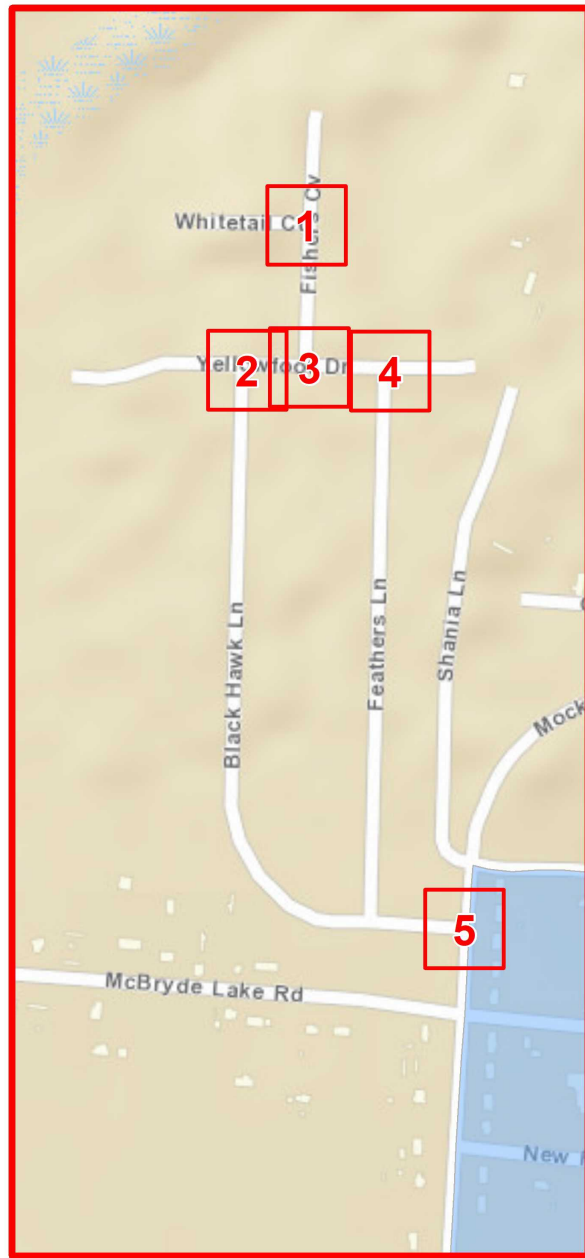
Municipality:	Unincorporated Areas
Project Number:	BO-24081
PE WBS Number:	50937.1.2
Con WBS Number:	50937.3.11
County:	Hoke

Sheet No.
4

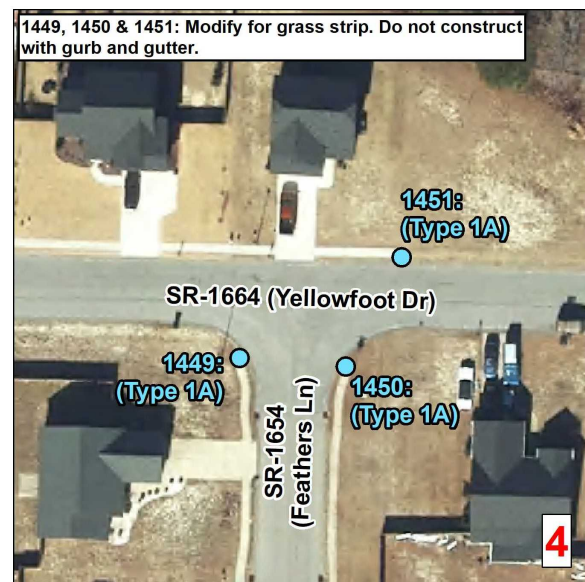
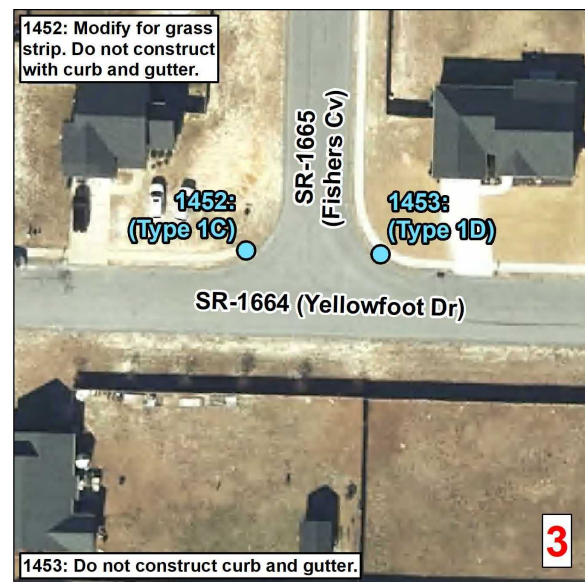
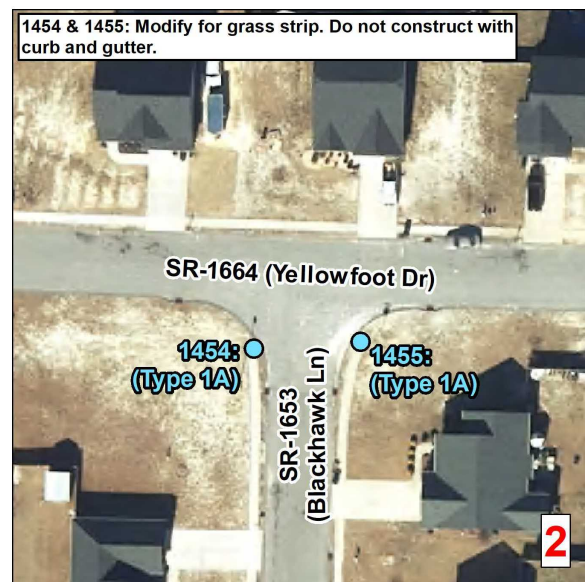
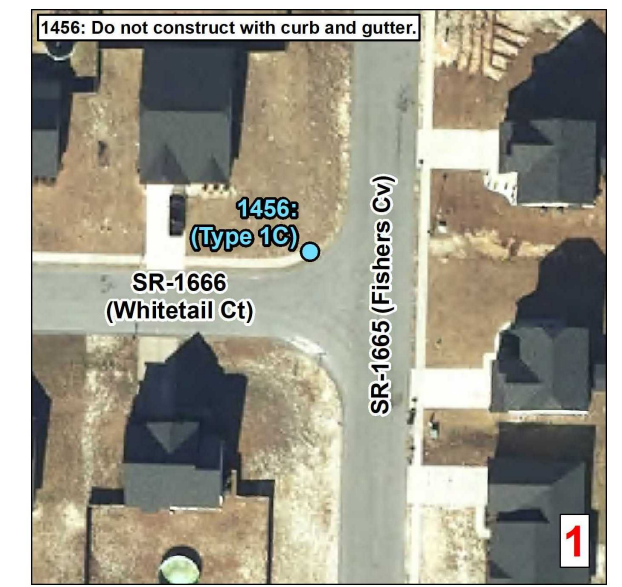
Ramp ID	Inset Map Number	Route 1	Route 2	2752000000-E (LF) Remove And Replace 2'-6" Concrete Curb & Gutter	2738000000-E (SY) Remove And Replace 4" Concrete Sidewalk	2738000000-E (SY) Remove 4" Concrete Sidewalk	2845000000-N (EA) Adjustment of Meter Boxes or Valve Boxes	2612500000-N (EA) Remove and Replace Concrete Curb Ramps	2759000000-N (EA) Remove Concrete Curb Ramps	Improvement Type
1466	8	SR-1806 (St Johns Loop)	SR-1811 (Windover Dr) (Eastern Intersection)					1		Type 1C - 848.06
1467	9	SR-1806 (St Johns Loop)	SR-1811 (Windover Dr) (Western Intersection)						1	Remove Ramp
1522	9	SR-1806 (St Johns Loop)	SR-1811 (Windover Dr) (Western Intersection)			6		1		Type 1C - 848.06
1468	10	SR-1806 (St Johns Loop)	SR-1810 (Oldstead Dr)					1		Type 1C - 848.06
1469	10	SR-1806 (St Johns Loop)	SR-1810 (Oldstead Dr)					1		Type 1C - 848.06
1470	11	SR-1806 (St Johns Loop)	SR-1808 (Sedgefield Dr) (Northern Intersection)					1		Type 1C - 848.06
1459	12	SR-1806 (St Johns Loop)	SR-1808 (Sedgefield Dr) (Southern Intersection)					1		Type 1C - 848.06
1460	13	SR-1806 (St Johns Loop)	SR-1822 (Sorrel Ct)					1		Type 1C - 848.06
1461	13	SR-1806 (St Johns Loop)	SR-1822 (Sorrel Ct)					1		Type 1C - 848.06
-	-	-	-	15*	15*	-	-	-	-	
<b>Sub-Total</b>				<b>15</b>	<b>15</b>	<b>6</b>	<b>0</b>	<b>8</b>	<b>1</b>	
<b>Sub-Total for Unincorporated Areas - Hoke County</b>				<b>15</b>	<b>15</b>	<b>6</b>	<b>1</b>	<b>21</b>	<b>1</b>	

\*Contingency line item amount provided for adjustments outside of curb ramp pay limits.

Notes: (1) ADA quantity totals are provided on the project 'ADA SUMMARY OF QUANTITIES - TOTALS' page. (2) Construct in accordance with Section 848. Detectable warnings shall be of one of the following materials: engineered plastics, rubber, or composite tile. Additionally, warnings shall be applied directly to the curb ramps by incorporating into the concrete of the curb ramps unless otherwise approved by the Engineer. Surface mounted rubber mats, brick, steel and stamped concrete pavers will not be accepted.



Sheet No.  
5



**Curb Ramps To Be Repaired**

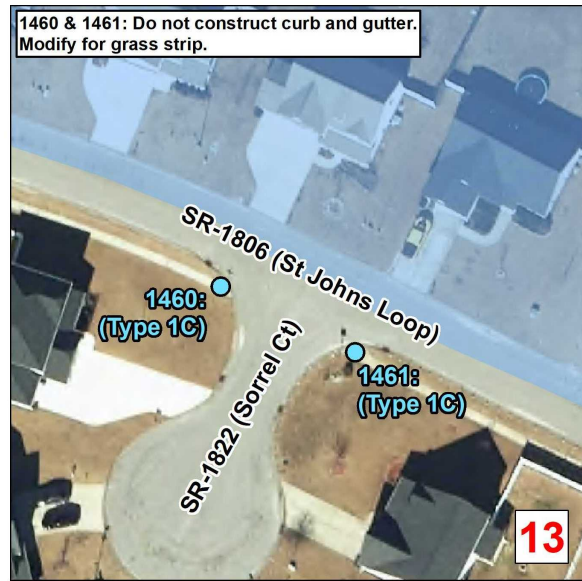
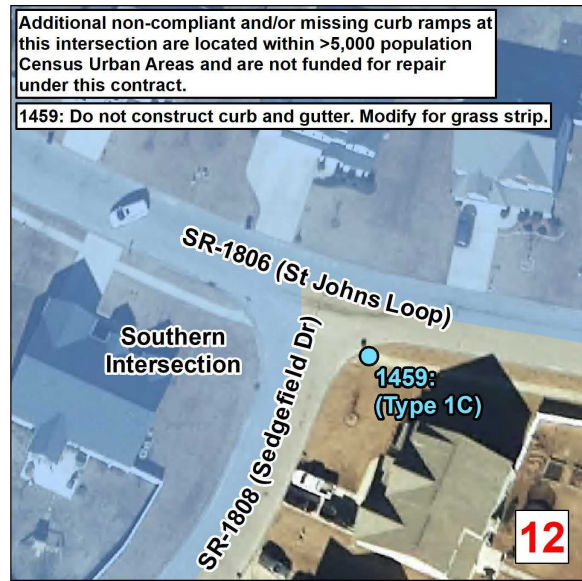
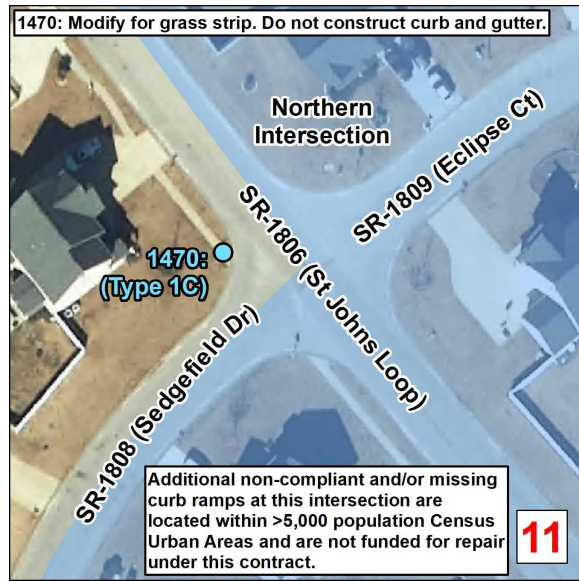
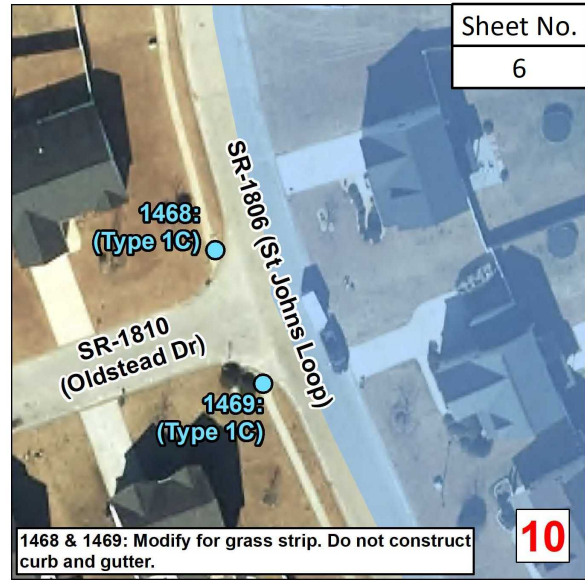
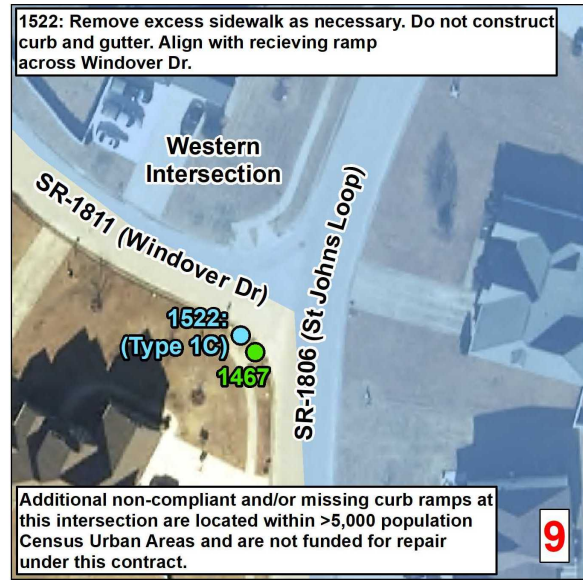
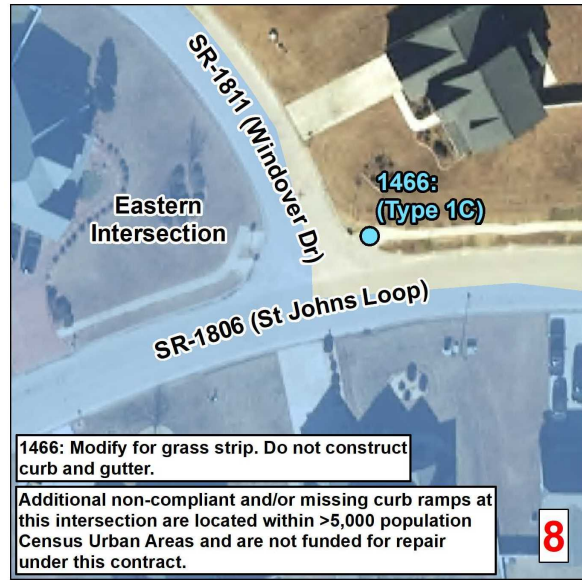
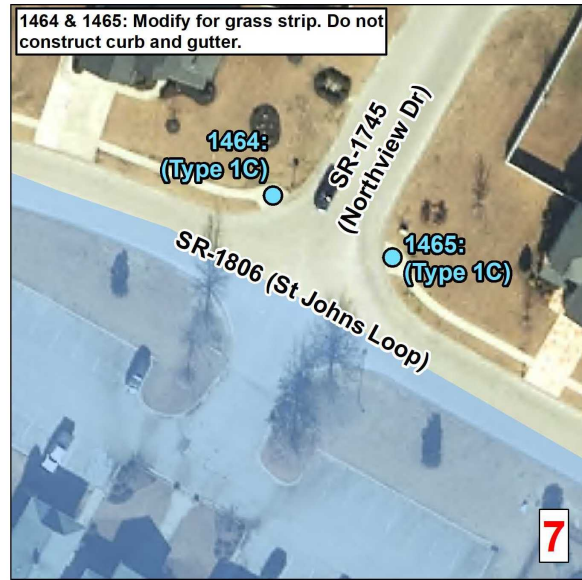
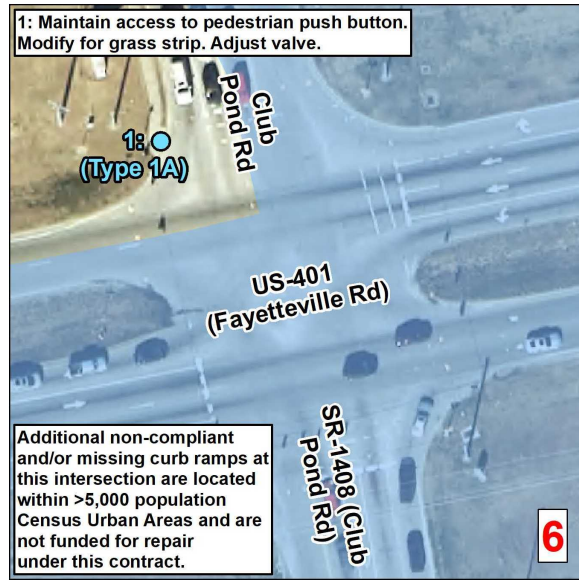
- Retrofit
- Remove and Replace
- New Curb Ramp
- Remove Ramp

Municipal Boundary  
 Census Urban Areas (>5,000 Pop)  
 NCHPO Historic Boundary (NR and LHD)

**Curb Ramps in Areas <5,000 Population**  
 Municipality: Unincorporated Areas  
 TIP Number: BO-24081  
 PE WBS Number: 50937.1.2  
 CON WBS Number: 50937.3.11  
 County: Hoke

NORTH CAROLINA DEPARTMENT  
 OF TRANSPORTATION  
 DIVISION 8

Source: NV5 Engineers and Consultants Inc., ESRI, NC OneMap, NCDOT, NCHPO



**Curb Ramps To Be Repaired**

- Retrofit
- Remove and Replace
- New Curb Ramp
- Remove Ramp

- Municipal Boundary
- Census Urban Areas (>5,000 Pop)
- NCHPO Historic Boundary (NR and LHD)

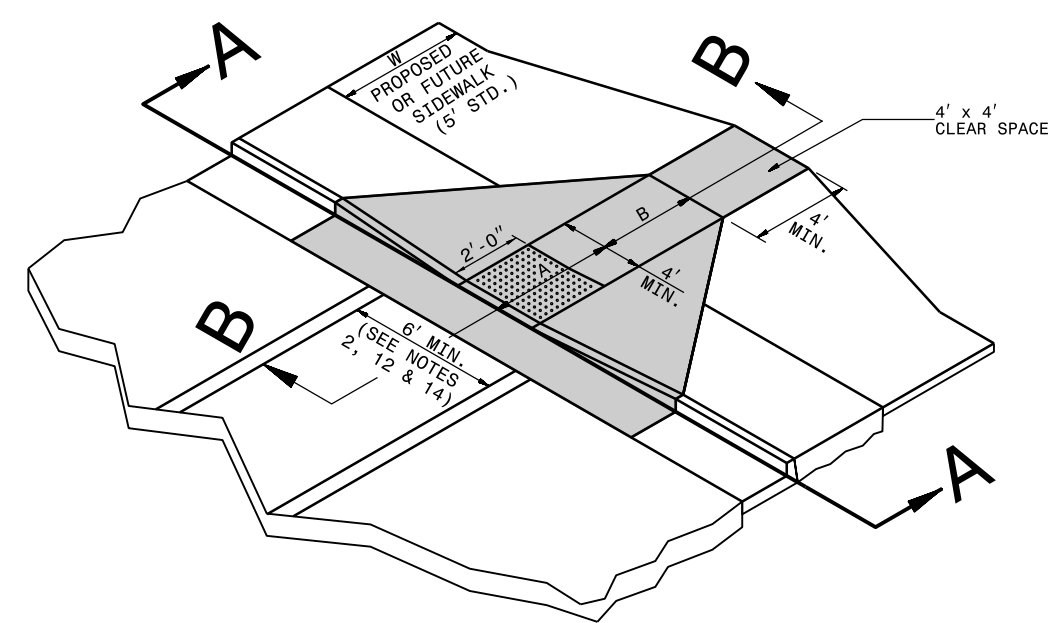
---

**Curb Ramps in Areas <5,000 Population**  
**Municipality: Unincorporated Areas**  
**TIP Number: BO-24081**  
**PE WBS Number: 50937.1.2**  
**CON WBS Number: 50937.3.11**  
**County: Hoke**

---

NORTH CAROLINA DEPARTMENT OF TRANSPORTATION  
DIVISION 8

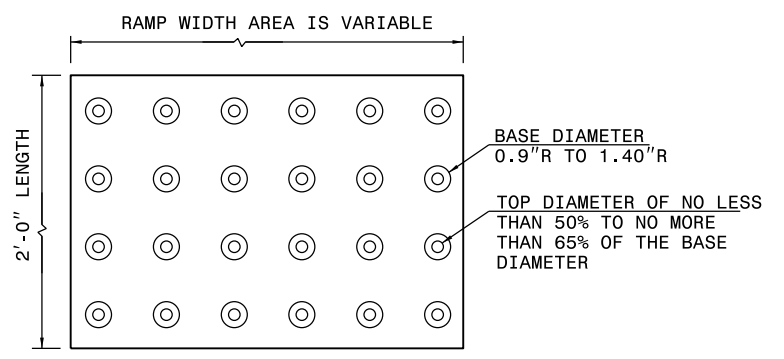
Source: NV5 Engineers and Consultants Inc., ESRI, NC OneMap, NCDOT, NCHPO



**ISOMETRIC VIEW**

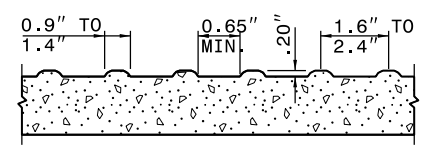
PAY LIMITS FOR CURB RAMP

**NOTES:**  
 DETECTABLE WARNING SURFACE SHALL COVER 2'-0" LENGTH AND FULL WIDTH OF THE RAMP FLOOR AS SHOWN ON THE DETAILS.  
 DETECTABLE WARNING SURFACE SHALL CONTRAST VISIBLY WITH ADJOINING SURFACE, EITHER LIGHT-ON-DARK, OR DARK-ON-LIGHT SEQUENCE COVERING THE ENTIRE RAMP.

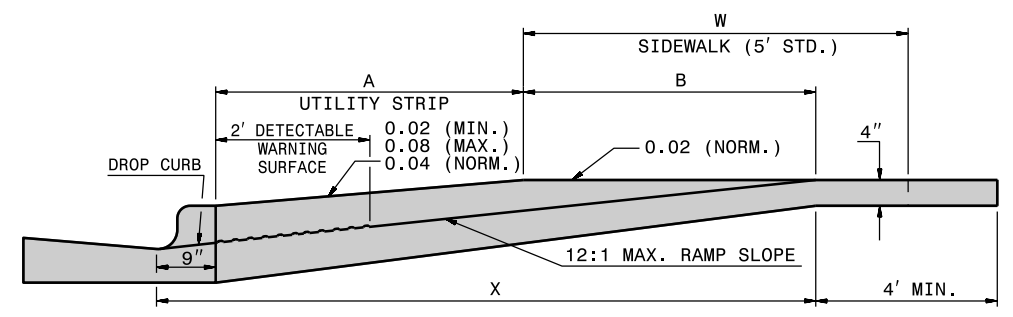


W	A	W+A+9"	X	B
5'	0.0'	5.8'	5.8'	5.0'*
6'	0.0'	6.8'	6.8'	6.0'**
7'	0.0'	7.8'	7.3'	6.5'**
8'	0.0'	8.8'	7.3'	6.5'**
5'	2.0'	7.8'	7.8'	5.0'
5'	2.5'	8.3'	8.1'	4.8'
5'	3.0'	8.8'	8.3'	4.4'
5'	3.5'	9.3'	8.4'	4.1'
5'	4.0'	9.8'	8.6'	3.8'
5'	4.5'	10.3'	8.7'	3.4'
5'	5.0'	10.8'	8.9'	3.1'

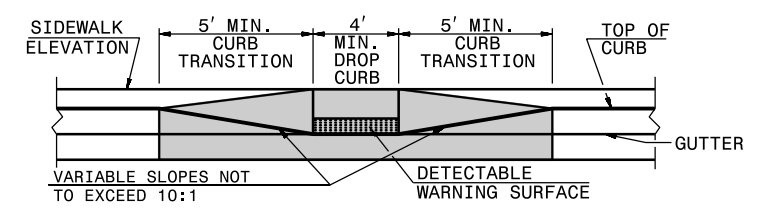
$B = X - (A + 9")$   
 B = DISTANCE FROM FRONT EDGE OF SIDEWALK TO BACK POINT OF 12:1 (8.33%) SLOPE.  
 \* BACK OF SIDEWALK DROP REQUIRED FOR ALL SIDEWALK SLOPES.  
 \*\* BACK OF SIDEWALK DROP REQUIRED FOR SIDEWALK SLOPES 0.04.



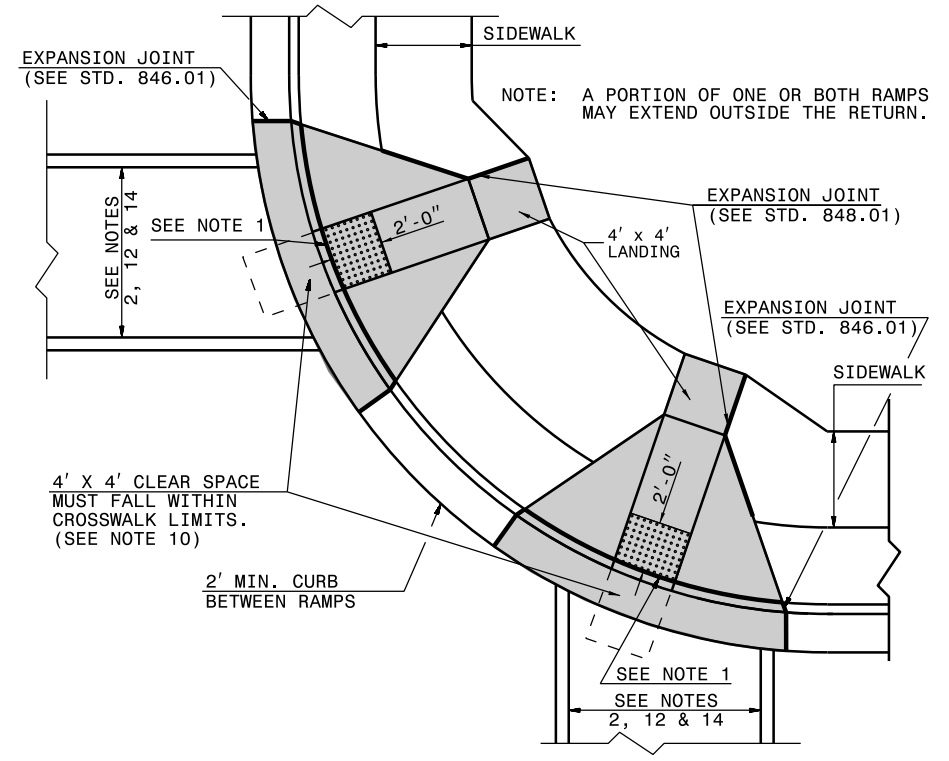
**DETECTABLE WARNING SURFACE**



**SECTION B-B**



**SECTION A-A**

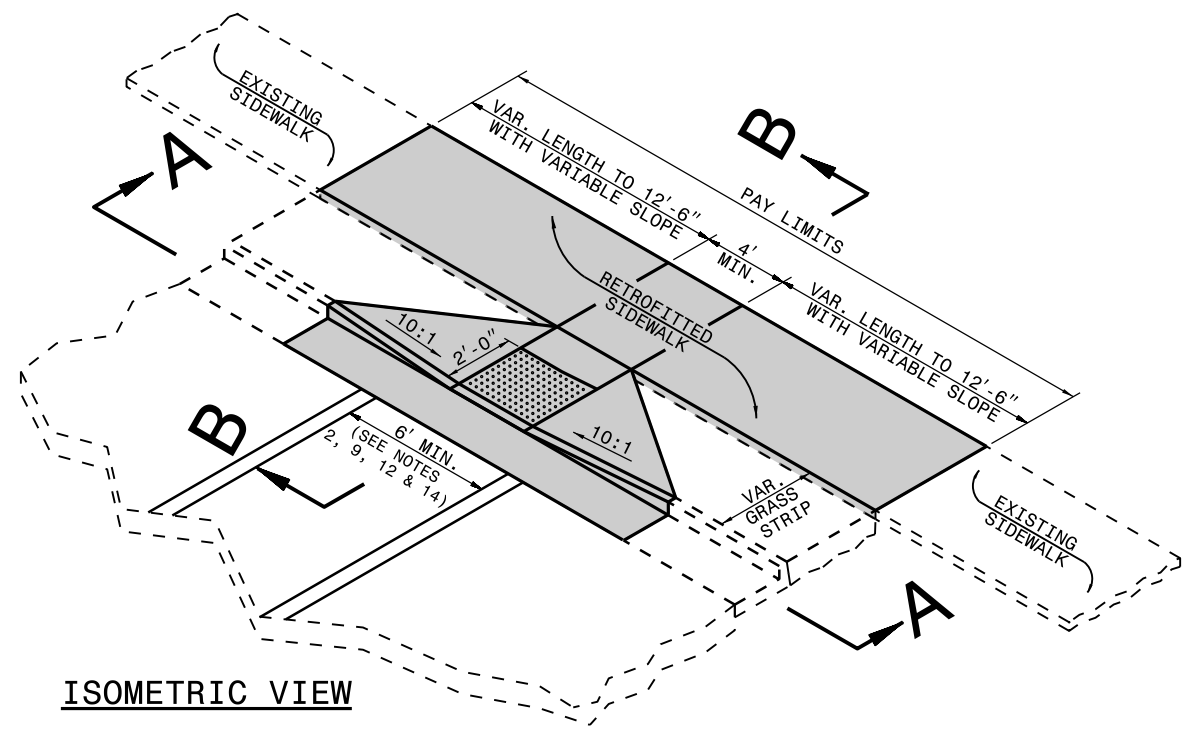


**PLAN VIEW**

DUAL RAMPS  
 ANY RADII  
 (4' MIN. FLOOR WIDTH)

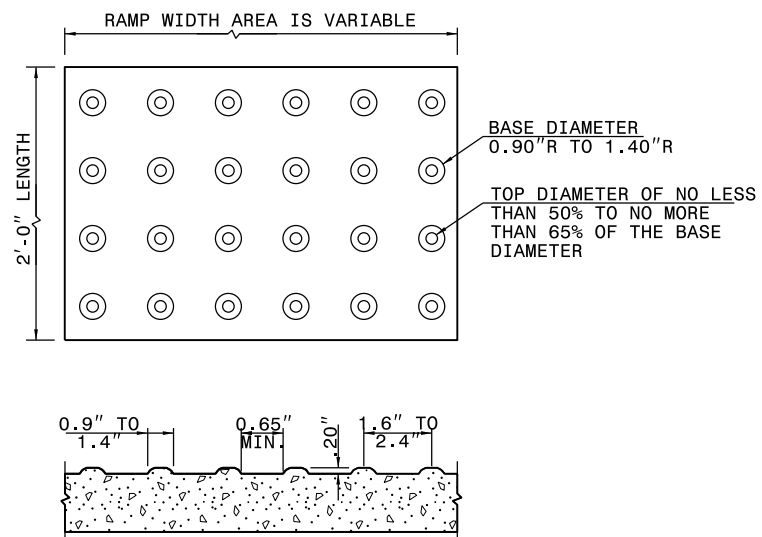
STATE OF NORTH CAROLINA  
 DEPT. OF TRANSPORTATION  
 DIVISION OF HIGHWAYS  
 RALEIGH, N.C.

ROADWAY STANDARD DRAWING FOR  
**CURB RAMP**  
 PROPOSED CURB AND GUTTER

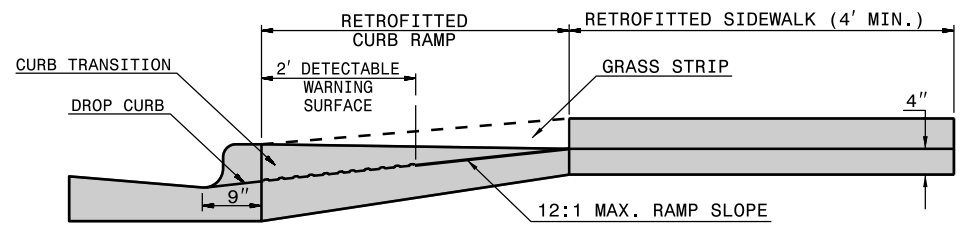


**ISOMETRIC VIEW**

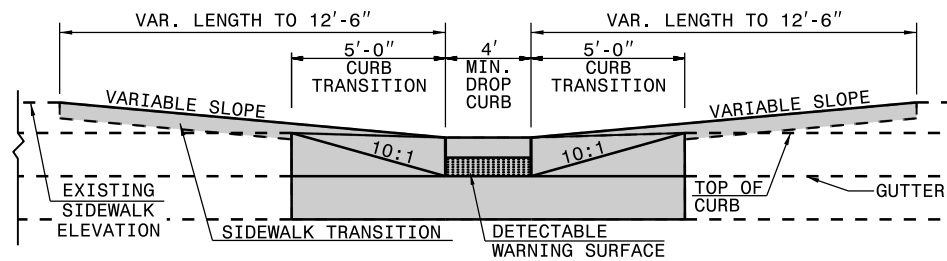
NOTES:  
 DETECTABLE WARNING SURFACE SHALL COVER 2'-0" LENGTH AND FULL WIDTH OF THE RAMP FLOOR AS SHOWN ON THE DETAILS.  
 DETECTABLE WARNING SURFACE SHALL CONTRAST VISIBLY WITH ADJOINING SURFACE, EITHER LIGHT-ON-DARK, OR DARK-ON-LIGHT SEQUENCE COVERING THE ENTIRE RAMP.



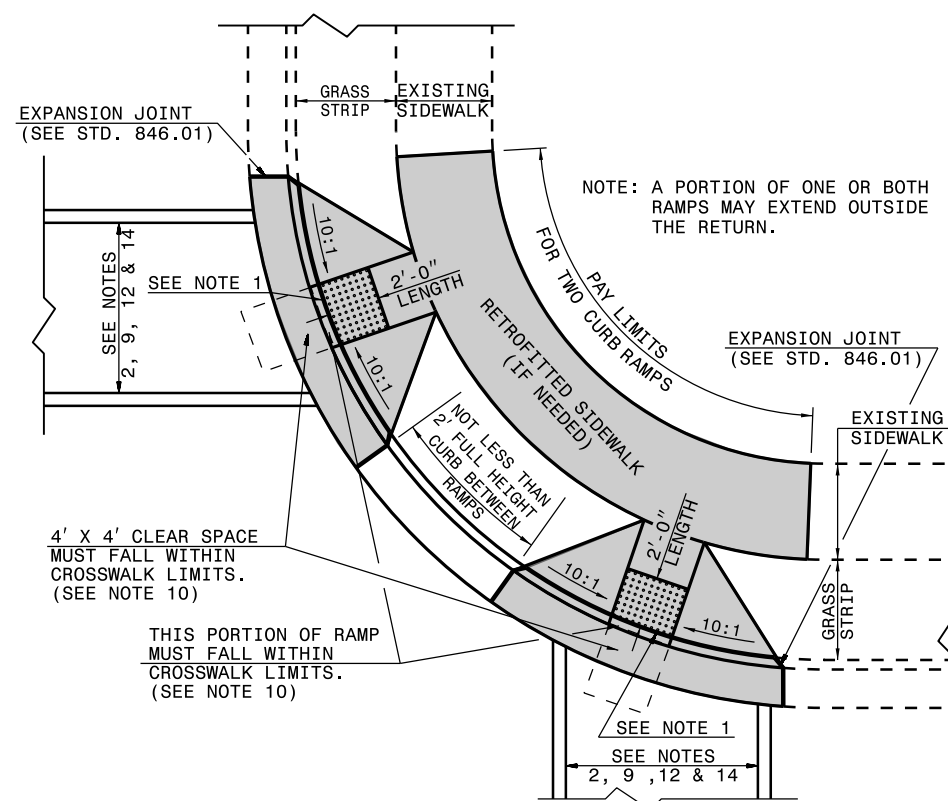
**DETECTABLE WARNING SURFACE**



**SECTION B-B**



**SECTION A-A**



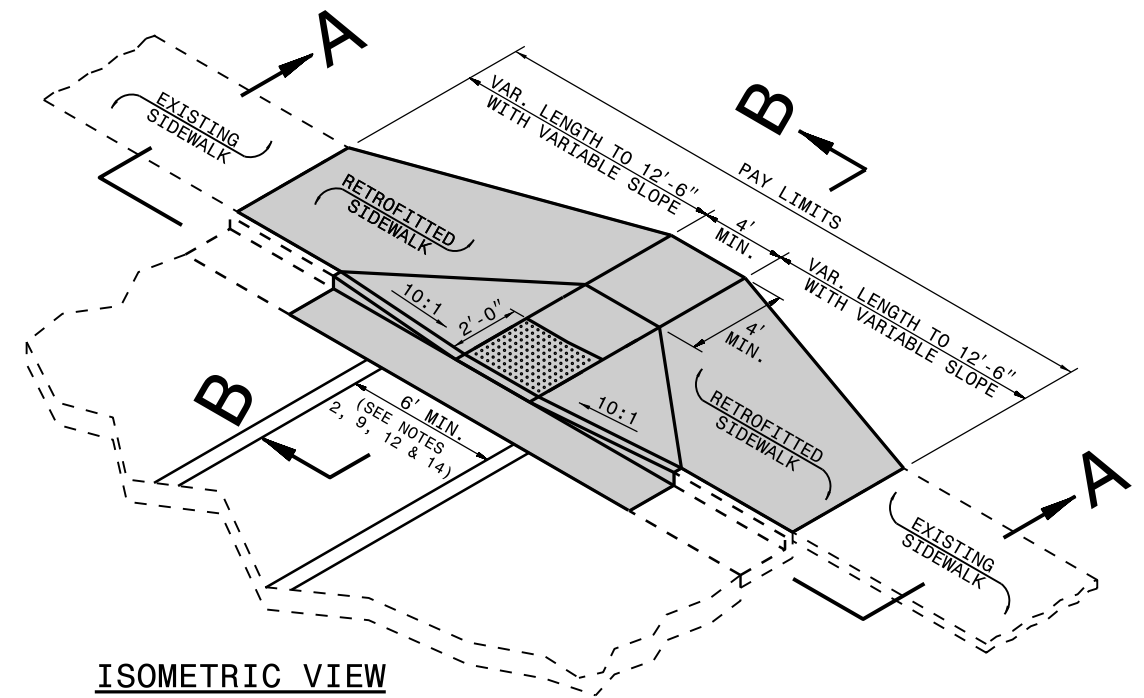
**PLAN VIEW**

DUAL RAMPS  
 ANY RADII  
 (40" MIN. FLOOR WIDTH)

PAY LIMITS OF CURB RAMP

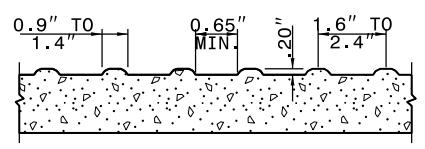
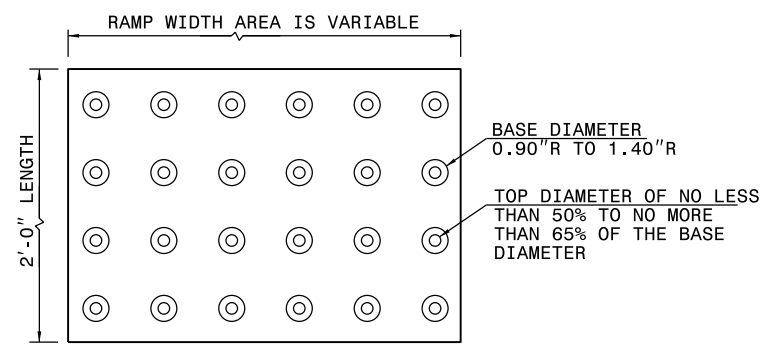
1-24  
 STATE OF  
 NORTH CAROLINA  
 DEPT. OF TRANSPORTATION  
 DIVISION OF HIGHWAYS  
 RALEIGH, N.C.

ROADWAY STANDARD DRAWING FOR  
**CURB RAMP**  
 CURB RAMP AND EXISTING SIDEWALK  
 WITH GRASS STRIP



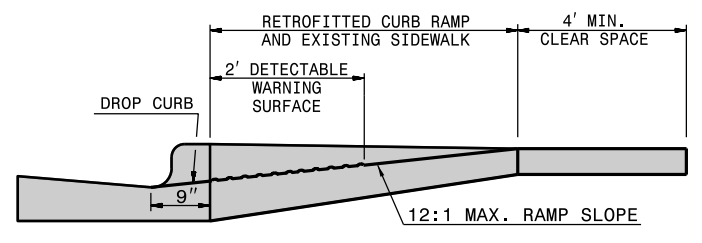
**ISOMETRIC VIEW**

NOTES:  
 DETECTABLE WARNING SURFACE SHALL COVER 2'-0" LENGTH AND FULL WIDTH OF THE RAMP FLOOR AS SHOWN ON THE DETAILS.  
 DETECTABLE WARNING SURFACE SHALL CONTRAST VISIBLY WITH ADJOINING SURFACE, EITHER LIGHT-ON-DARK, OR DARK-ON-LIGHT SEQUENCE COVERING THE ENTIRE RAMP.

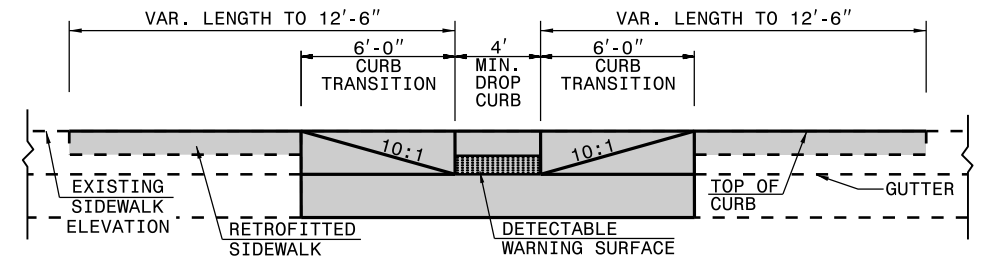


**DETECTABLE WARNING SURFACE**

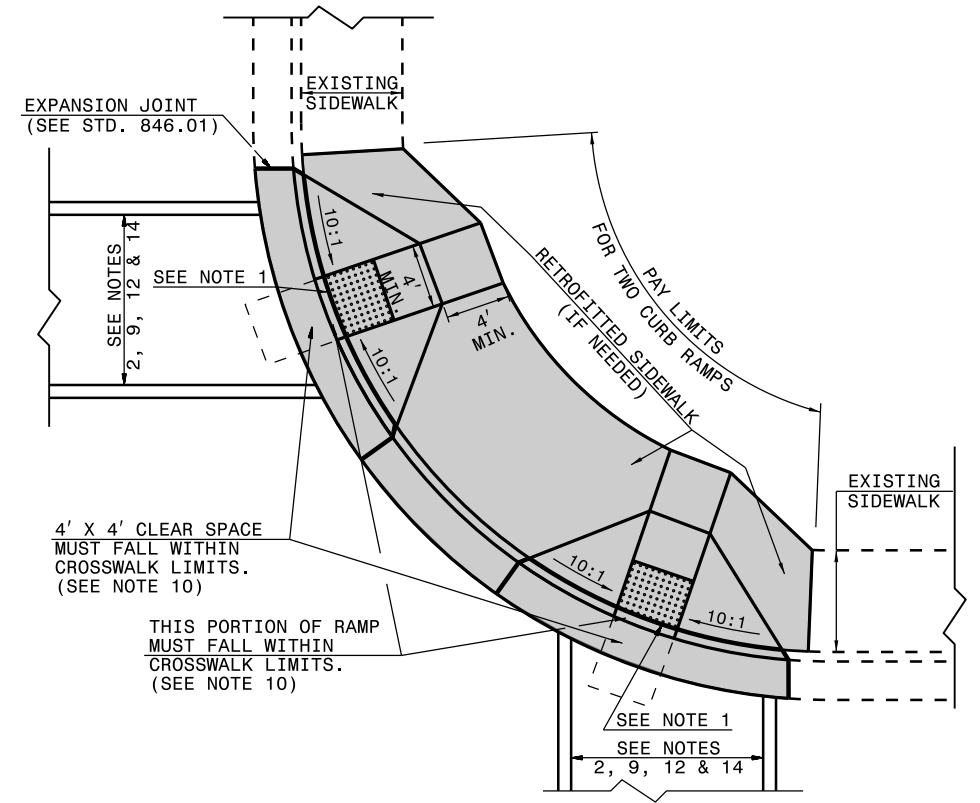
PAY LIMITS OF CURB RAMP



**SECTION B-B**



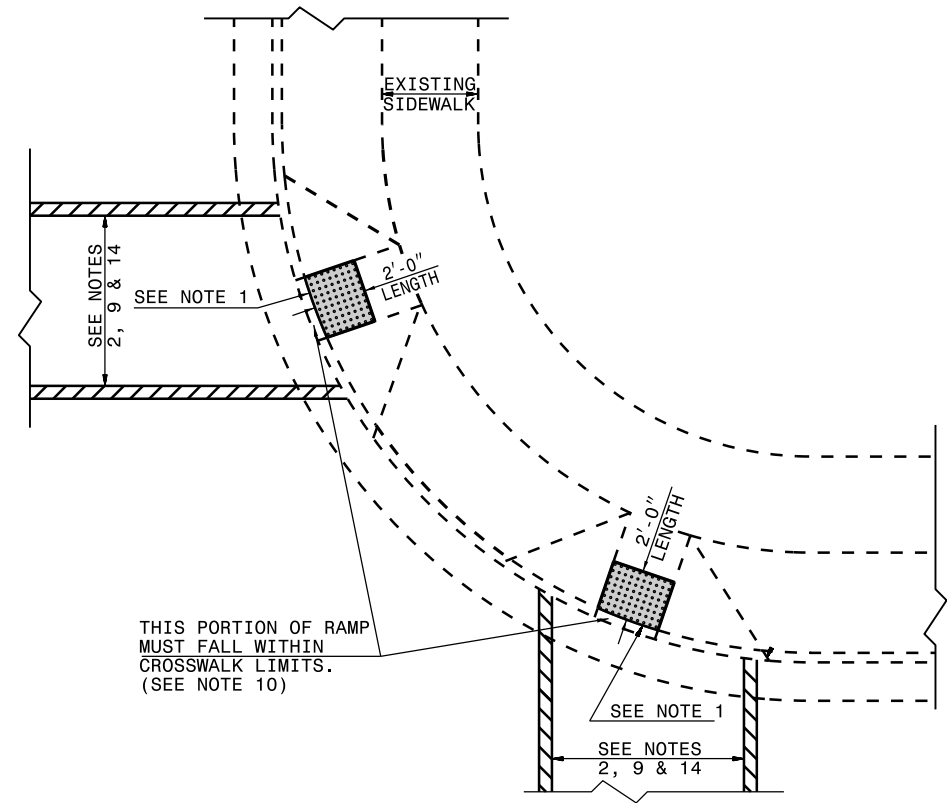
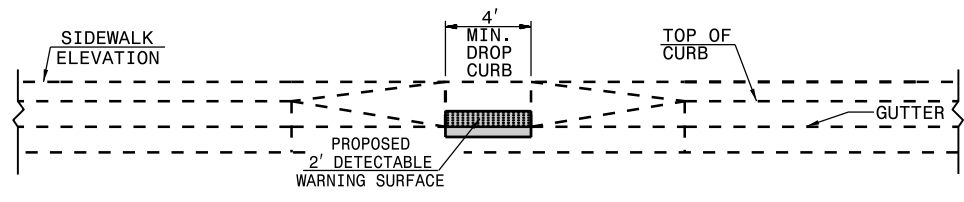
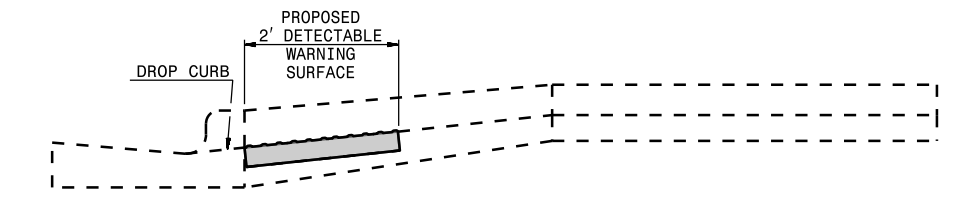
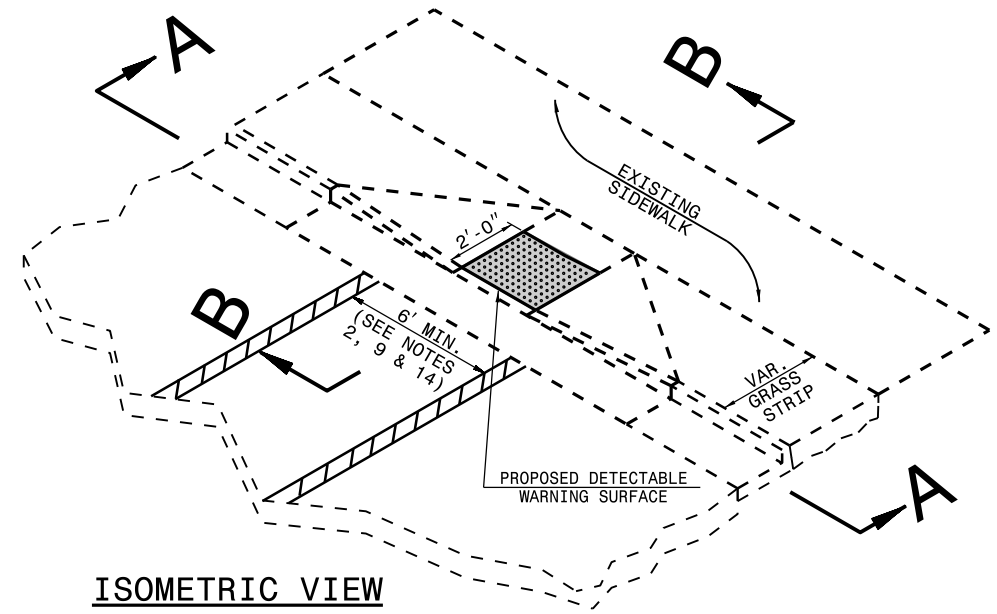
**SECTION A-A**



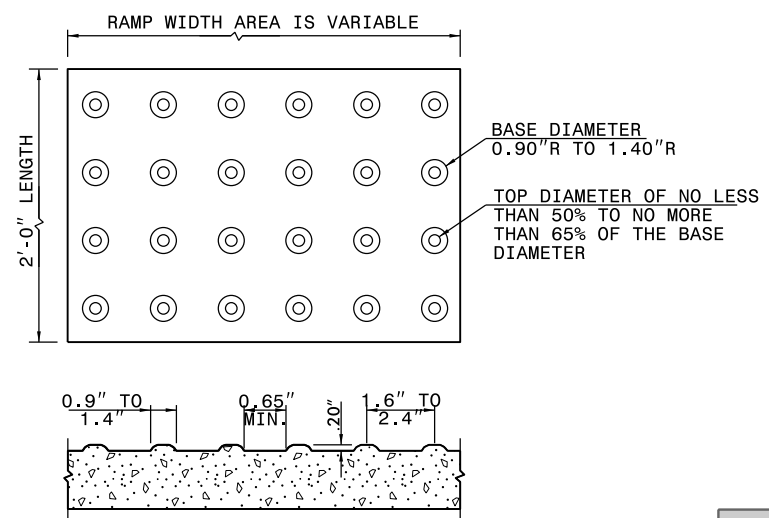
**PLAN VIEW**

DUAL RAMPS  
 ANY RADII  
 (40" MIN. FLOOR WIDTH)

1-24 STATE OF NORTH CAROLINA DEPT. OF TRANSPORTATION DIVISION OF HIGHWAYS RALEIGH, N.C.  
 ROADWAY STANDARD DRAWING FOR CURB RAMP CURB RAMP AND EXISTING SIDEWALK ADJACENT TO CURB  
 SHEET 3 OF 13  
**848.06**



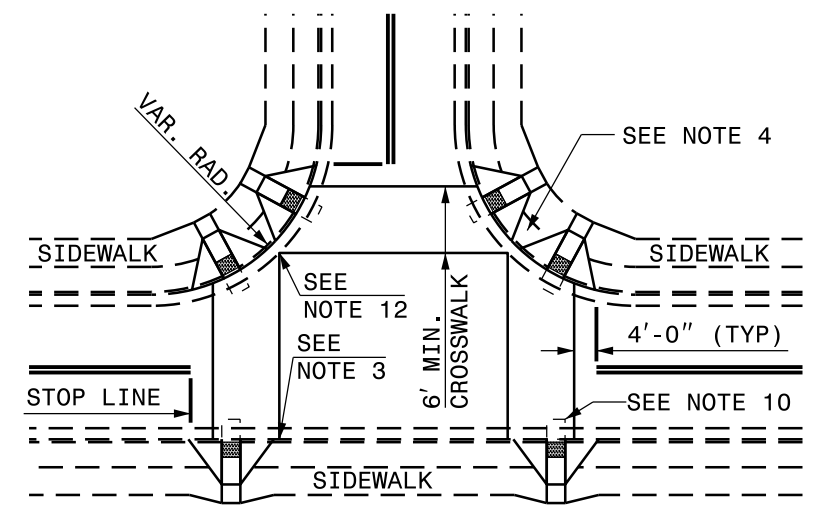
NOTES:  
 DETECTABLE WARNING SURFACE SHALL COVER 2'-0" LENGTH AND FULL WIDTH OF THE RAMP FLOOR AS SHOWN ON THE DETAILS.  
 DETECTABLE WARNING SURFACE SHALL CONTRAST VISIBLY WITH ADJOINING SURFACE, EITHER LIGHT-ON-DARK, OR DARK-ON-LIGHT SEQUENCE COVERING THE ENTIRE RAMP.



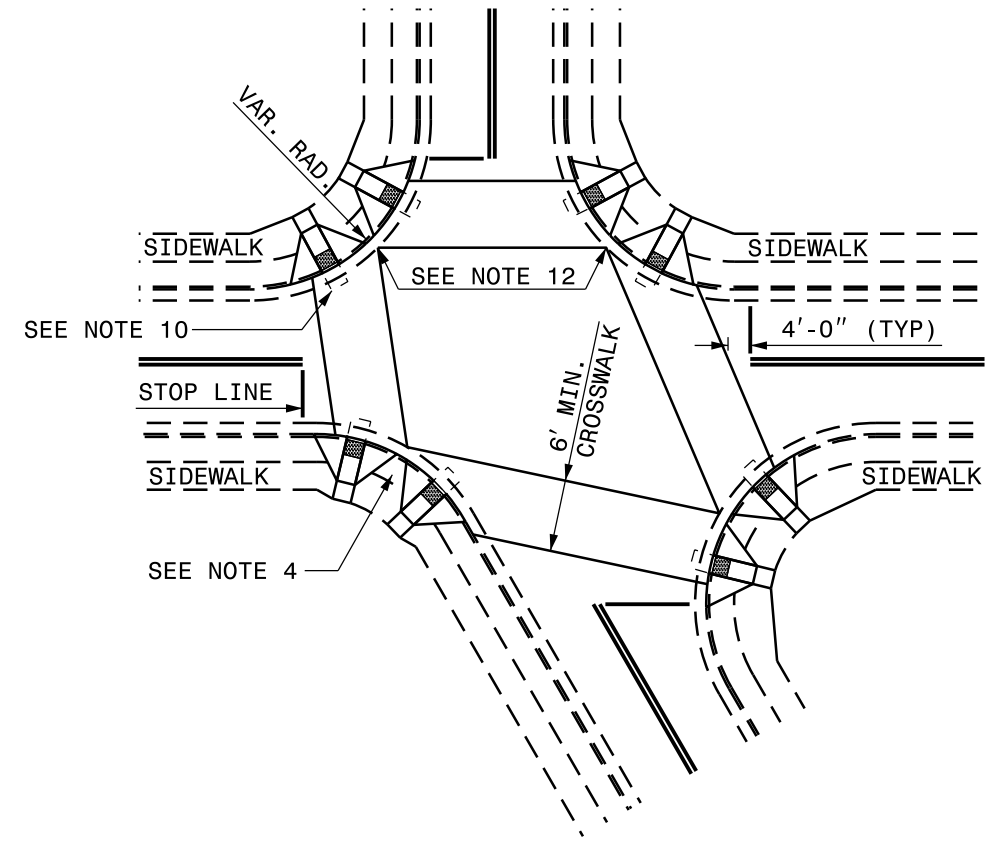
■ PAY LIMITS OF RETROFIT CURB RAMP

DUAL RAMPS  
 ANY RADII  
 (40" MIN. FLOOR WIDTH)

1-24 STATE OF NORTH CAROLINA DEPT. OF TRANSPORTATION DIVISION OF HIGHWAYS RALEIGH, N.C.  
 ROADWAY STANDARD DRAWING FOR CURB RAMP  
 RETROFITTING DETECTABLE WARNING SURFACE ONTO EXISTING CURB RAMP  
 SHEET 4 OF 13  
**848.06**


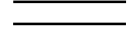


DETAIL SHOWING TYPICAL LOCATION OF CURB RAMPS, PEDESTRIAN CROSSWALKS AND STOP LINES FOR TEE INTERSECTIONS



DETAIL SHOWING TYPICAL LOCATION OF CURB RAMPS, PEDESTRIAN CROSSWALKS AND STOP LINES

ROADWAY  
PLAN SYMBOL  
**CR**  
FOR PROPOSED  
CURB RAMP

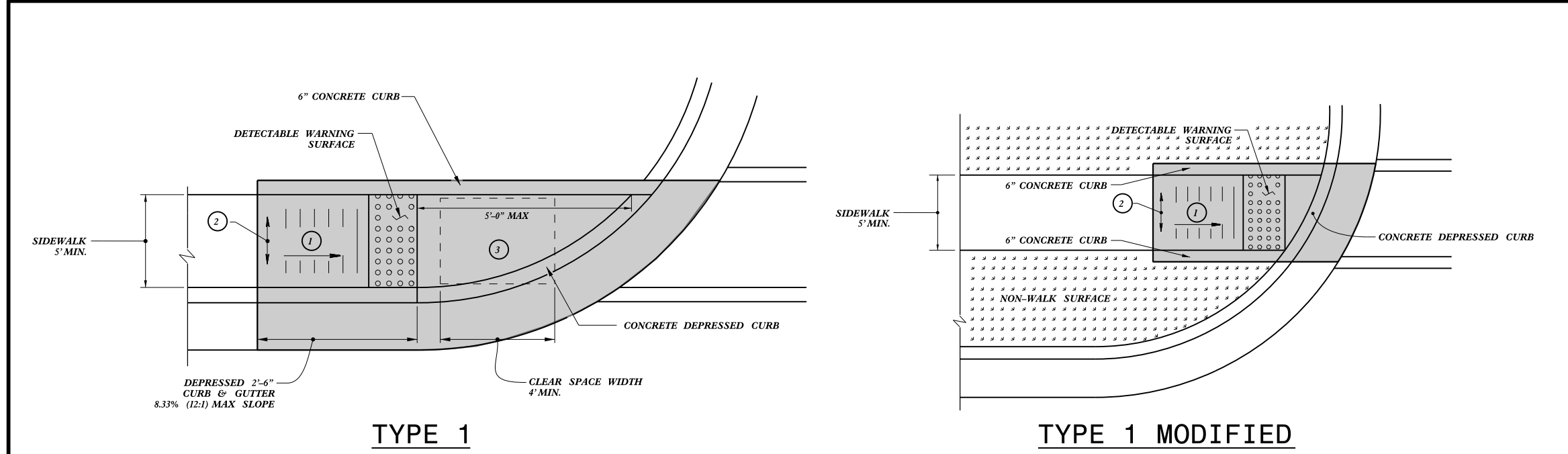
 PROPOSED CURB RAMP W/ CLEAR SPACE  
 PROPOSED OR FUTURE SIDEWALK

ALLOWABLE LOCATIONS  
DUAL RAMP RADII.....ANY

1-24 STATE OF NORTH CAROLINA DEPT. OF TRANSPORTATION DIVISION OF HIGHWAYS RALEIGH, N.C.

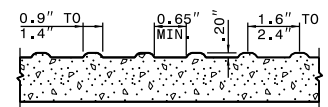
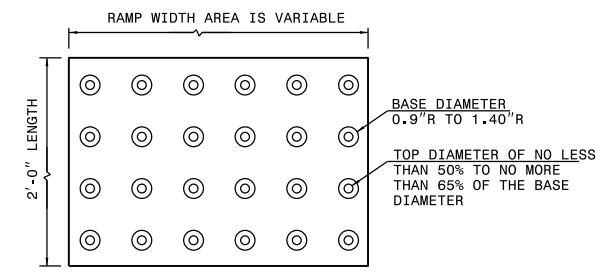
ROADWAY STANDARD DRAWING FOR  
**CURB RAMP**  
CURB RAMP LOCATION

SHEET 5 OF 13  
**848.06**



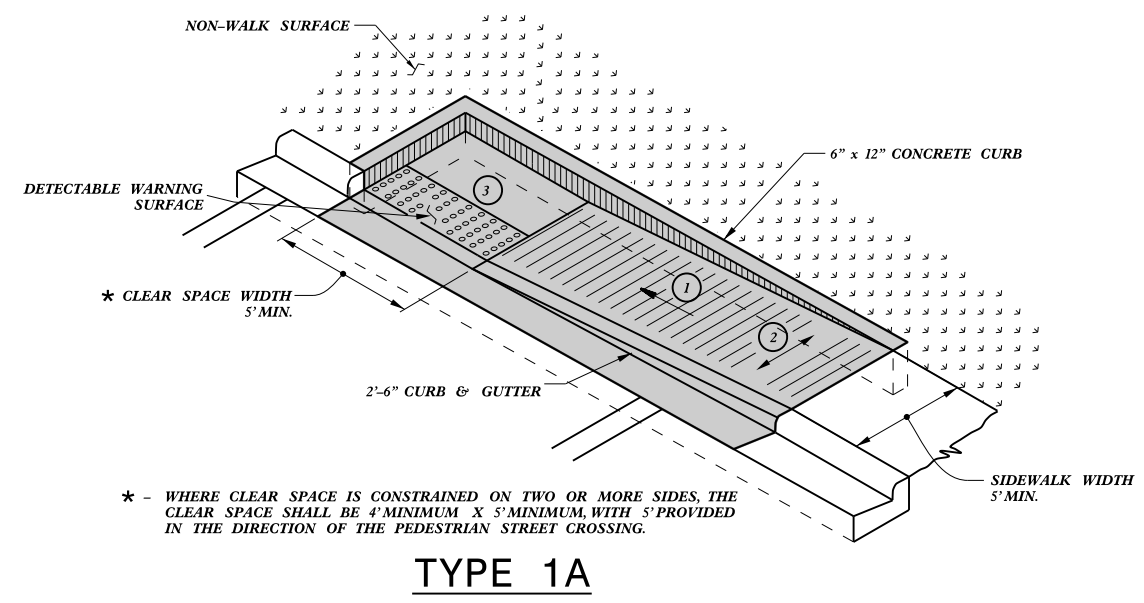
- ① 8.33% (12:1) MAX RAMP SLOPE
- ② CROSS SLOPE: 2.00%
- ③ MAXIMUM CROSS SLOPE AND LONGITUDINAL SLOPE OF 2.00%.

NOTES:  
 DETECTABLE WARNING SURFACE SHALL COVER 2'-0" LENGTH AND FULL WIDTH OF THE RAMP FLOOR AS SHOWN ON THE DETAILS.  
 DETECTABLE WARNING SURFACE SHALL CONTRAST VISIBLY WITH ADJOINING SURFACE, EITHER LIGHT-ON-DARK, OR DARK-ON-LIGHT SEQUENCE COVERING THE ENTIRE RAMP.



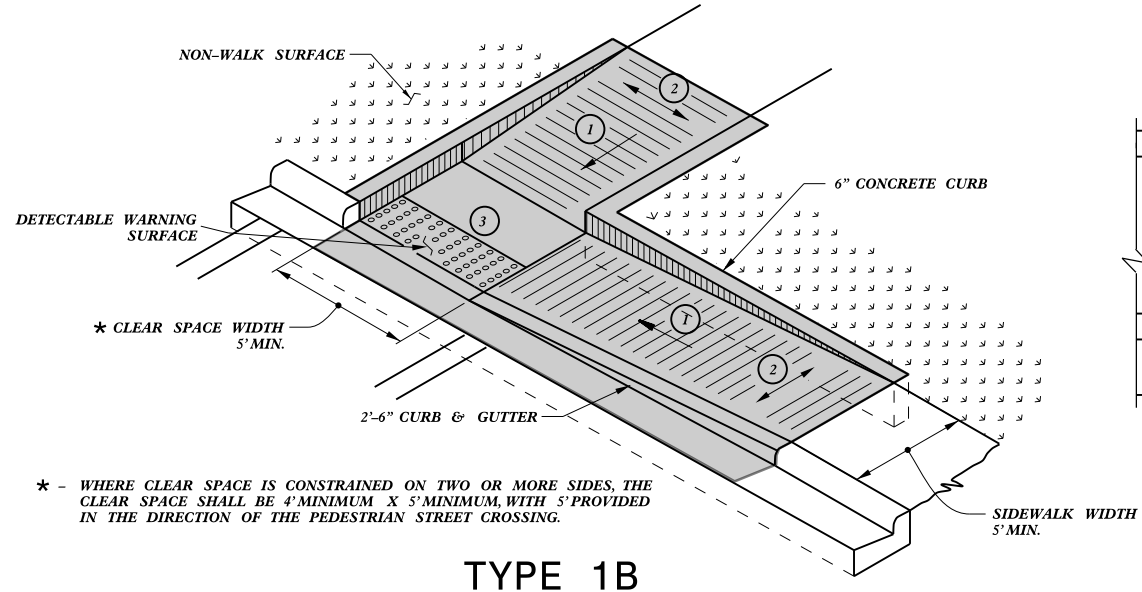
**DETECTABLE WARNING SURFACE**

PAY LIMITS FOR 1 CURB RAMP



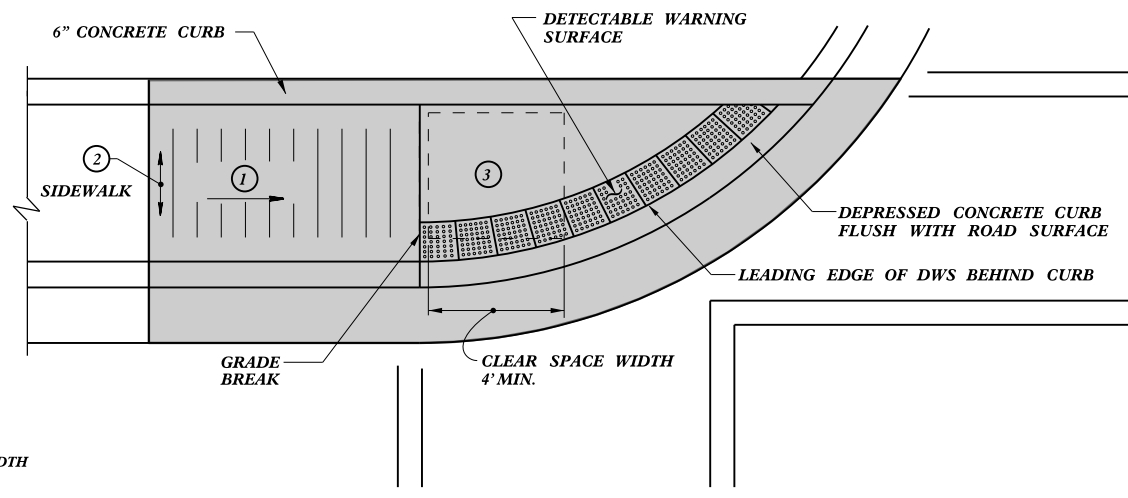
**TYPE 1A**

1-24 STATE OF NORTH CAROLINA DEPT. OF TRANSPORTATION DIVISION OF HIGHWAYS RALEIGH, N.C.  
 ROADWAY STANDARD DRAWING FOR CURB RAMP DIRECTIONAL RAMP  
 SHEET 6 OF 13  
**848.06**



\* - WHERE CLEAR SPACE IS CONSTRAINED ON TWO OR MORE SIDES, THE CLEAR SPACE SHALL BE 4' MINIMUM X 5' MINIMUM, WITH 5' PROVIDED IN THE DIRECTION OF THE PEDESTRIAN STREET CROSSING.

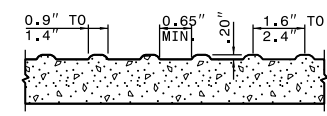
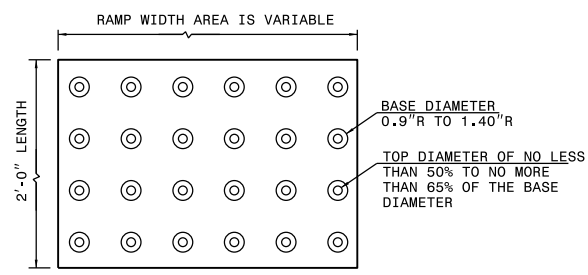
**TYPE 1B**



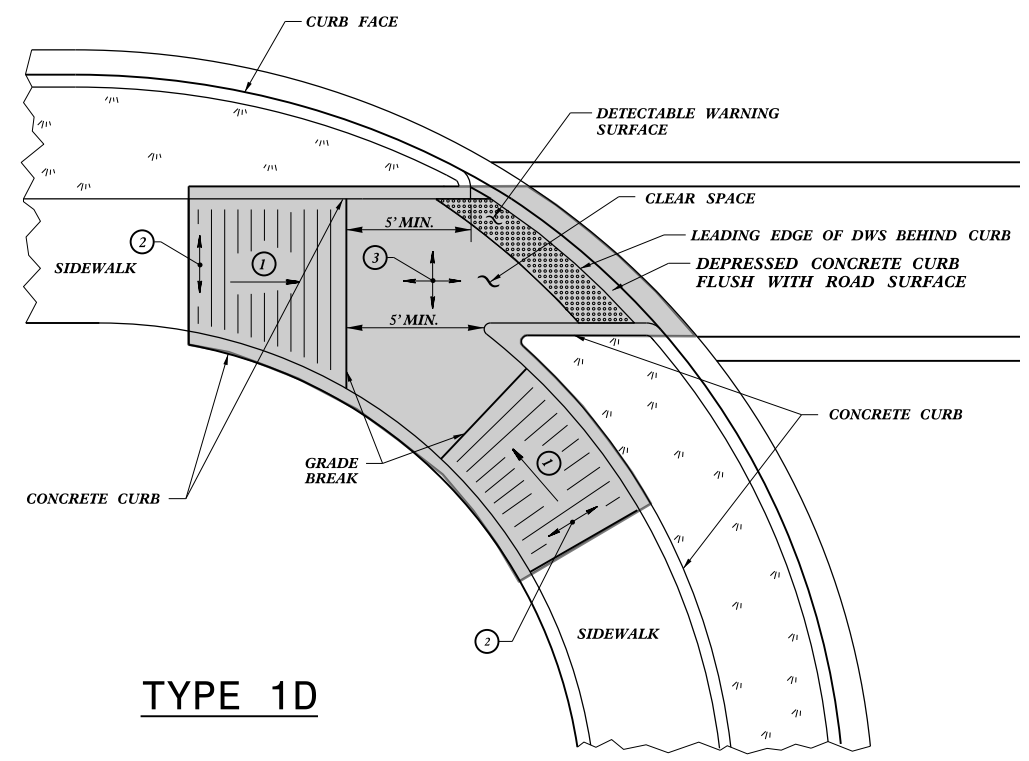
**TYPE 1C**

- ① 8.33% (12:1) MAX RAMP SLOPE
- ② CROSS SLOPE: 2.00%
- ③ MAXIMUM CROSS SLOPE AND LONGITUDINAL SLOPE OF 2.00%.

NOTES:  
 DETECTABLE WARNING SURFACE SHALL COVER 2'-0" LENGTH AND FULL WIDTH OF THE RAMP FLOOR AS SHOWN ON THE DETAILS.  
 DETECTABLE WARNING SURFACE SHALL CONTRAST VISIBLY WITH ADJOINING SURFACE, EITHER LIGHT-ON-DARK, OR DARK-ON-LIGHT SEQUENCE COVERING THE ENTIRE RAMP.



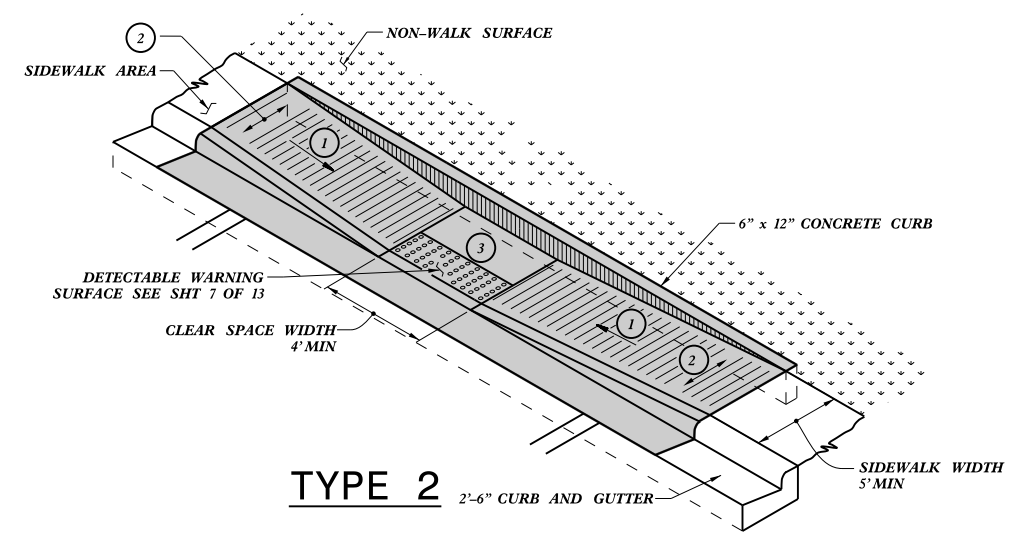
**DETECTABLE WARNING SURFACE**



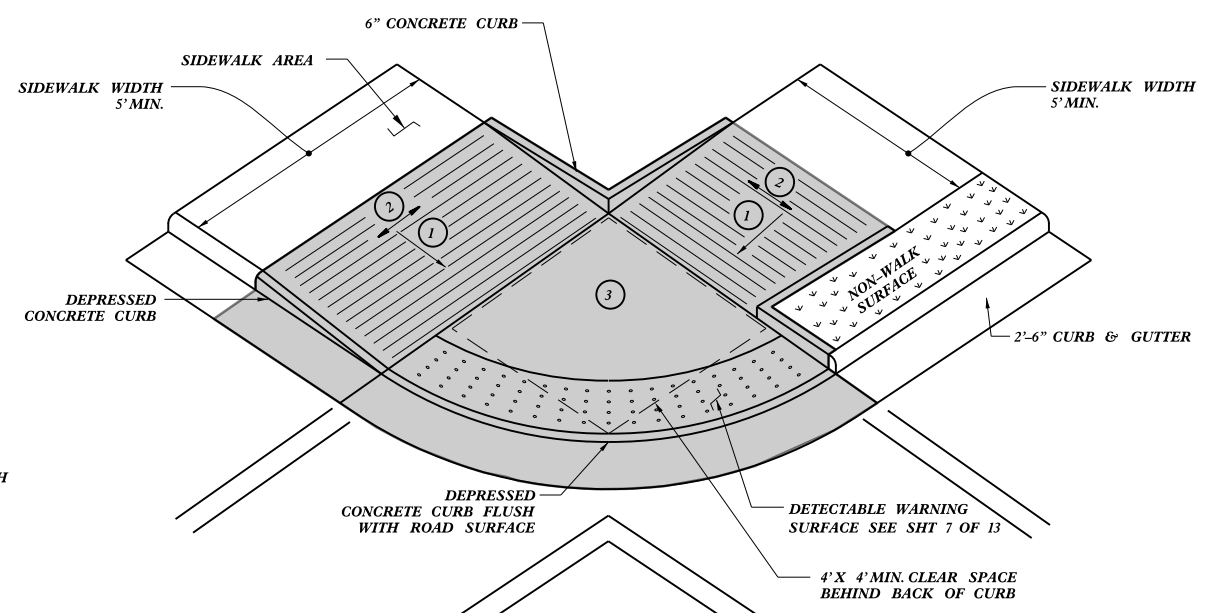
**TYPE 1D**

PAY LIMITS FOR 1 CURB RAMP

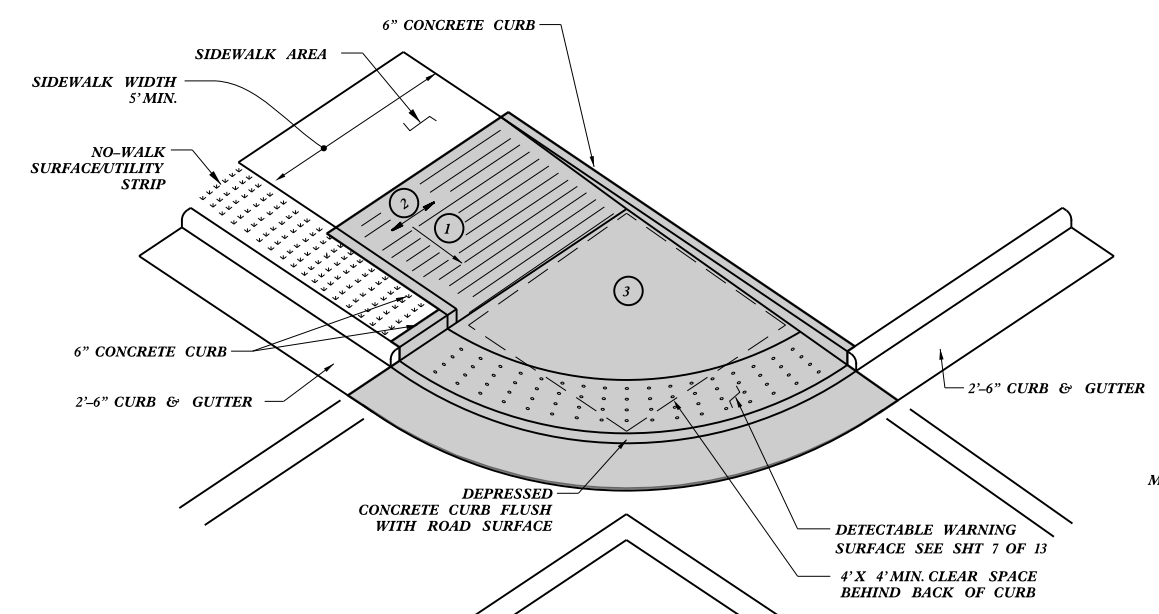
1-24 STATE OF NORTH CAROLINA DEPT. OF TRANSPORTATION DIVISION OF HIGHWAYS RALEIGH, N.C.  
 ROADWAY STANDARD DRAWING FOR CURB RAMP DIRECTIONAL RAMP  
 SHEET 7 OF 13  
**848.06**



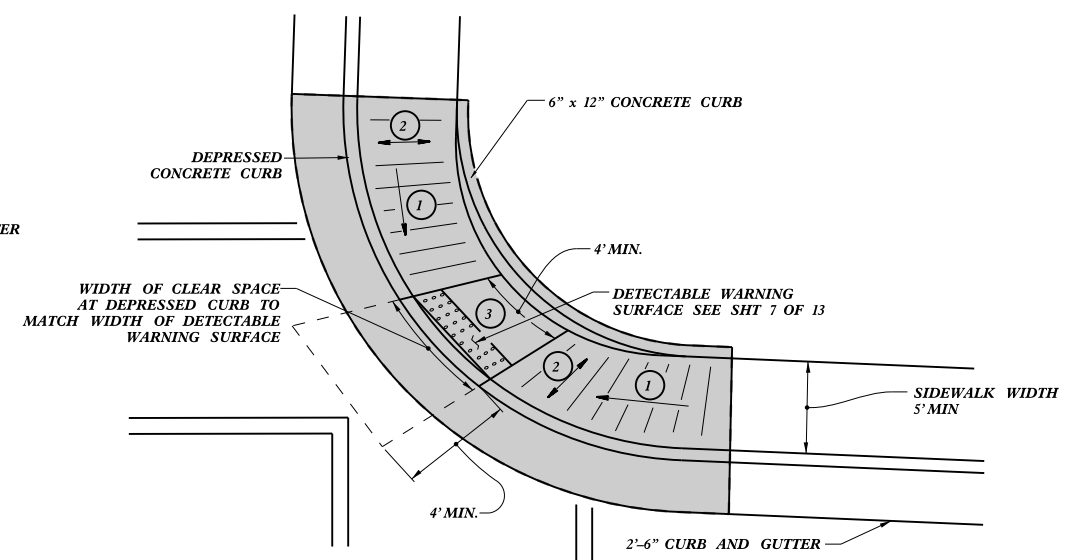
**TYPE 2**



**TYPE 2A**



**TYPE 2A MODIFIED**

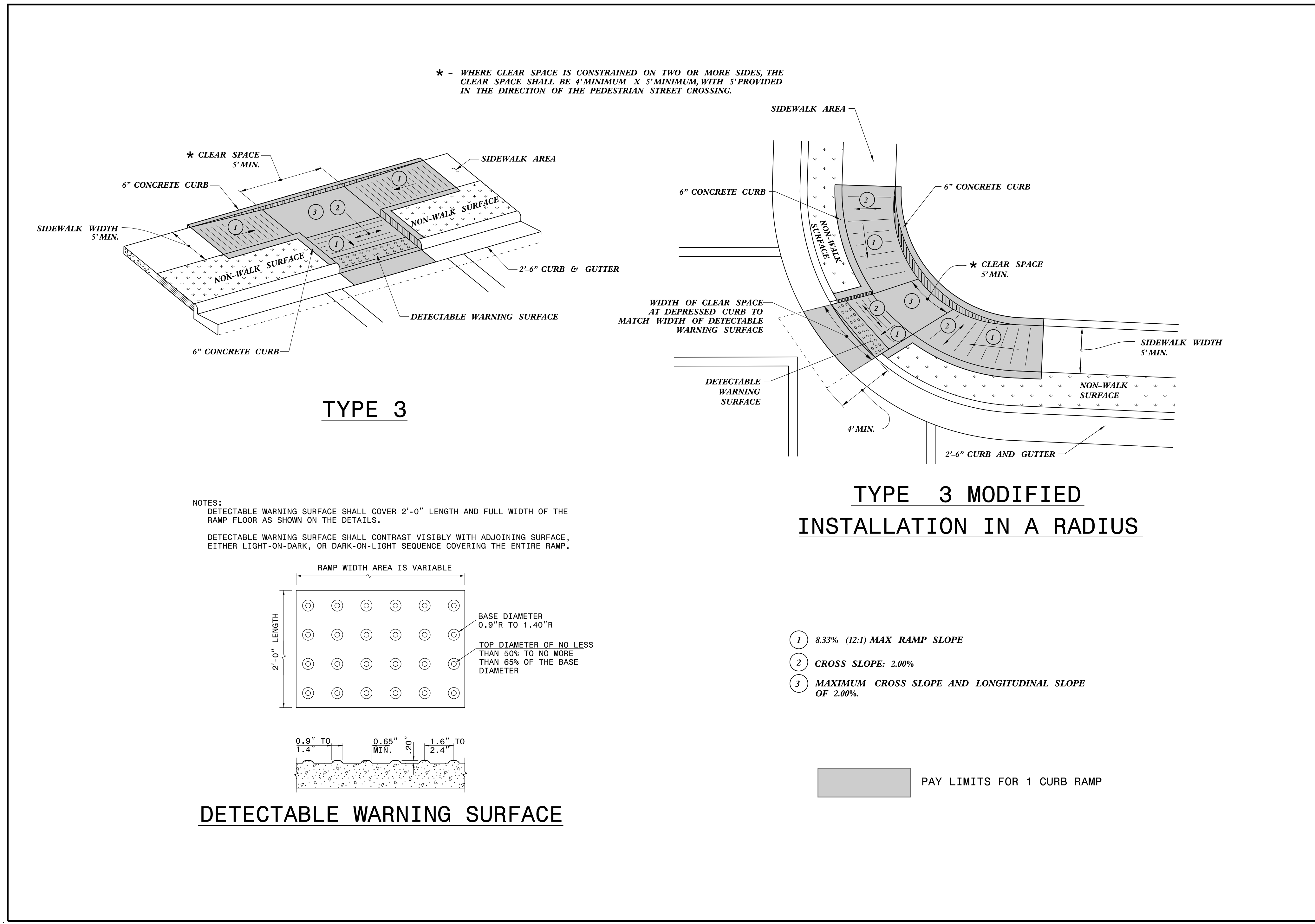


**TYPE 2B**

- 1 8.33% (12:1) MAX RAMP SLOPE
- 2 CROSS SLOPE: 2.00%
- 3 MAXIMUM CROSS SLOPE AND LONGITUDINAL SLOPE OF 2.00%

PAY LIMITS FOR 1 CURB RAMP

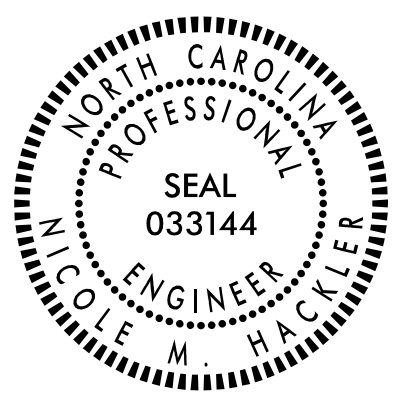
1-24 STATE OF NORTH CAROLINA DEPT. OF TRANSPORTATION DIVISION OF HIGHWAYS RALEIGH, N.C.  
 ROADWAY STANDARD DRAWING FOR CURB RAMP PARALLEL RAMP  
 SHEET 8 OF 13  
**848.06**



STATE OF NORTH CAROLINA  
DEPT. OF TRANSPORTATION  
DIVISION OF HIGHWAYS  
RALEIGH, N.C.

ROADWAY STANDARD DRAWING FOR  
**CURB RAMP**  
PARALLEL RAMP

SHEET 9 OF 13  
**848D06**



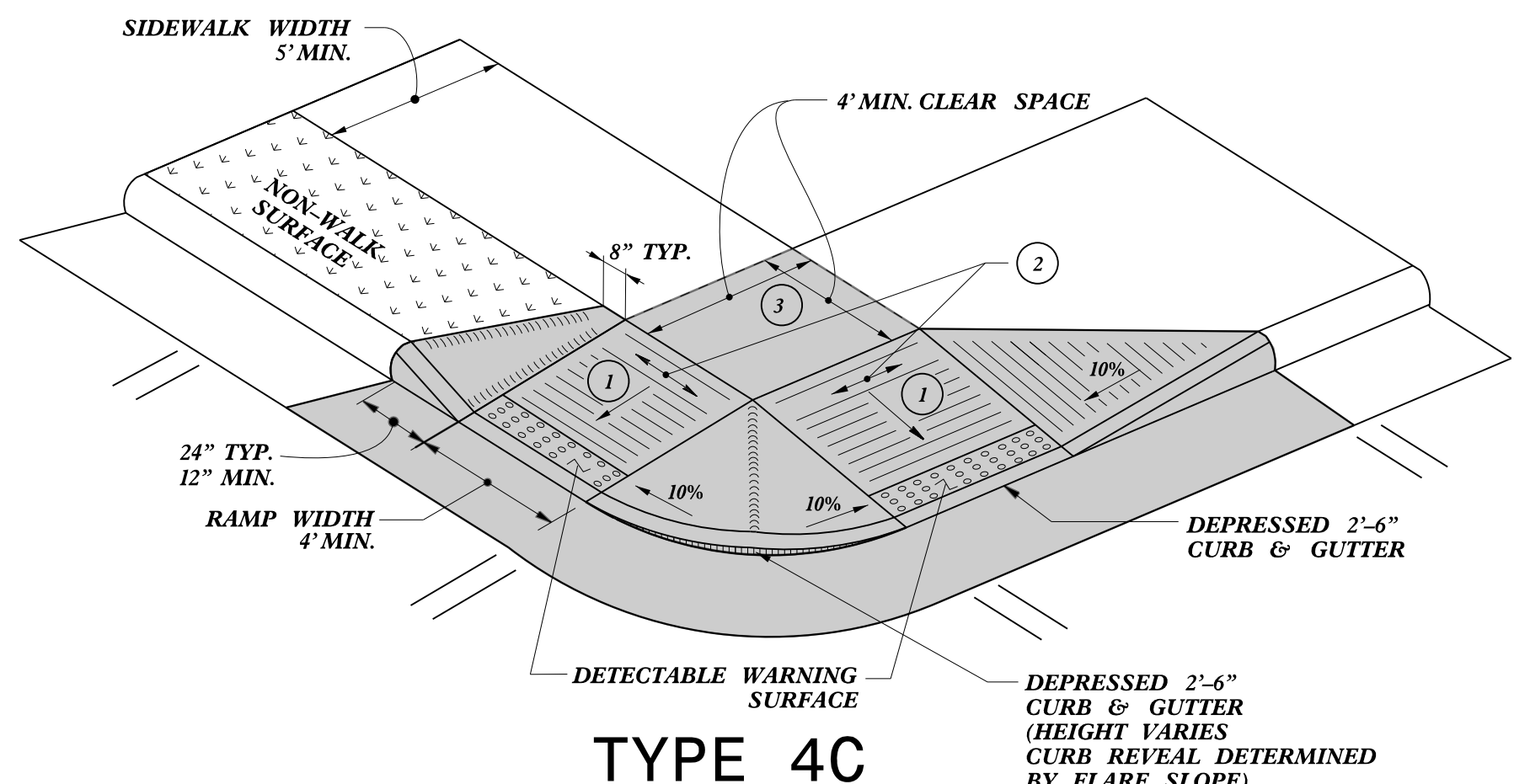
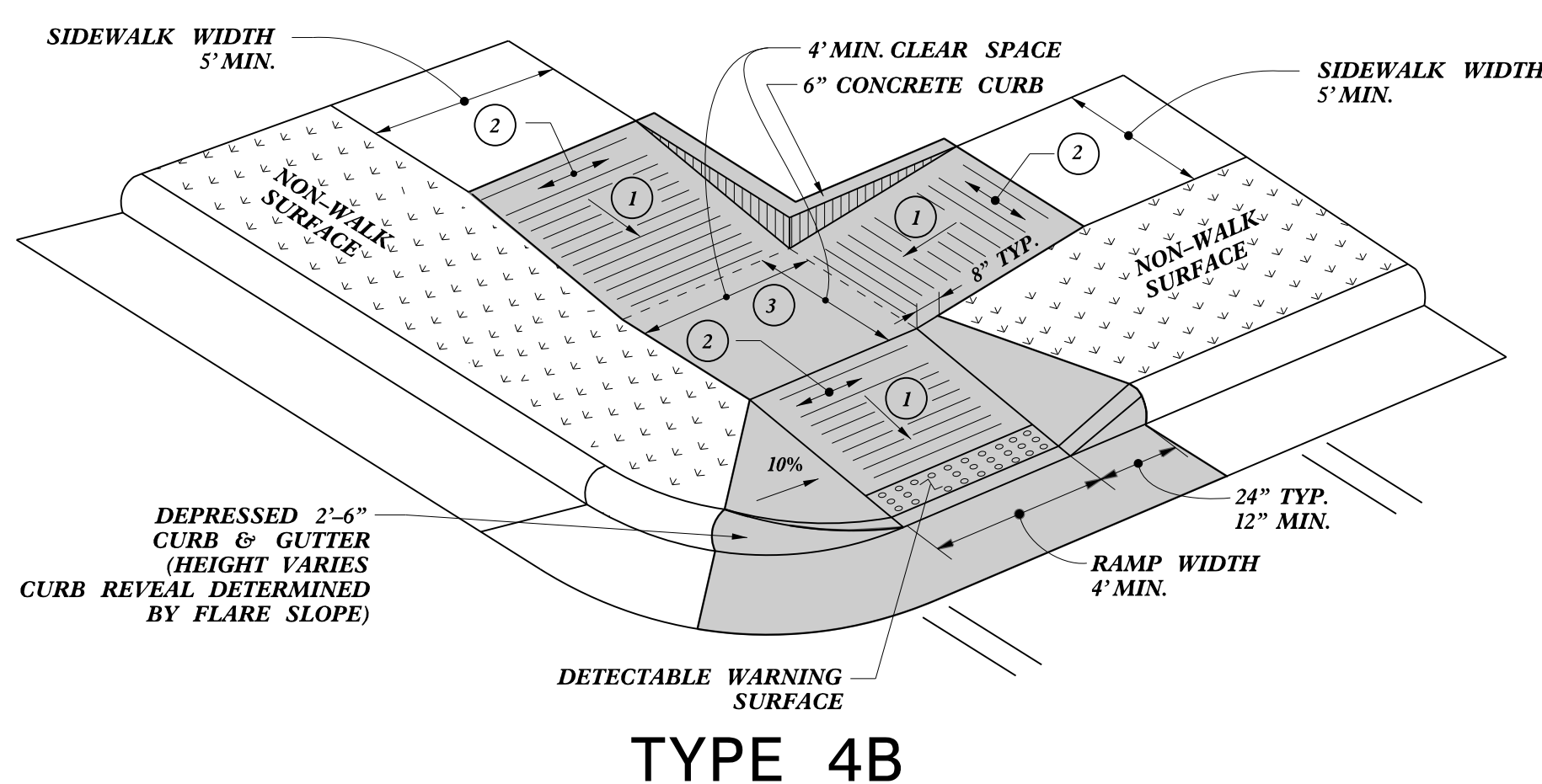
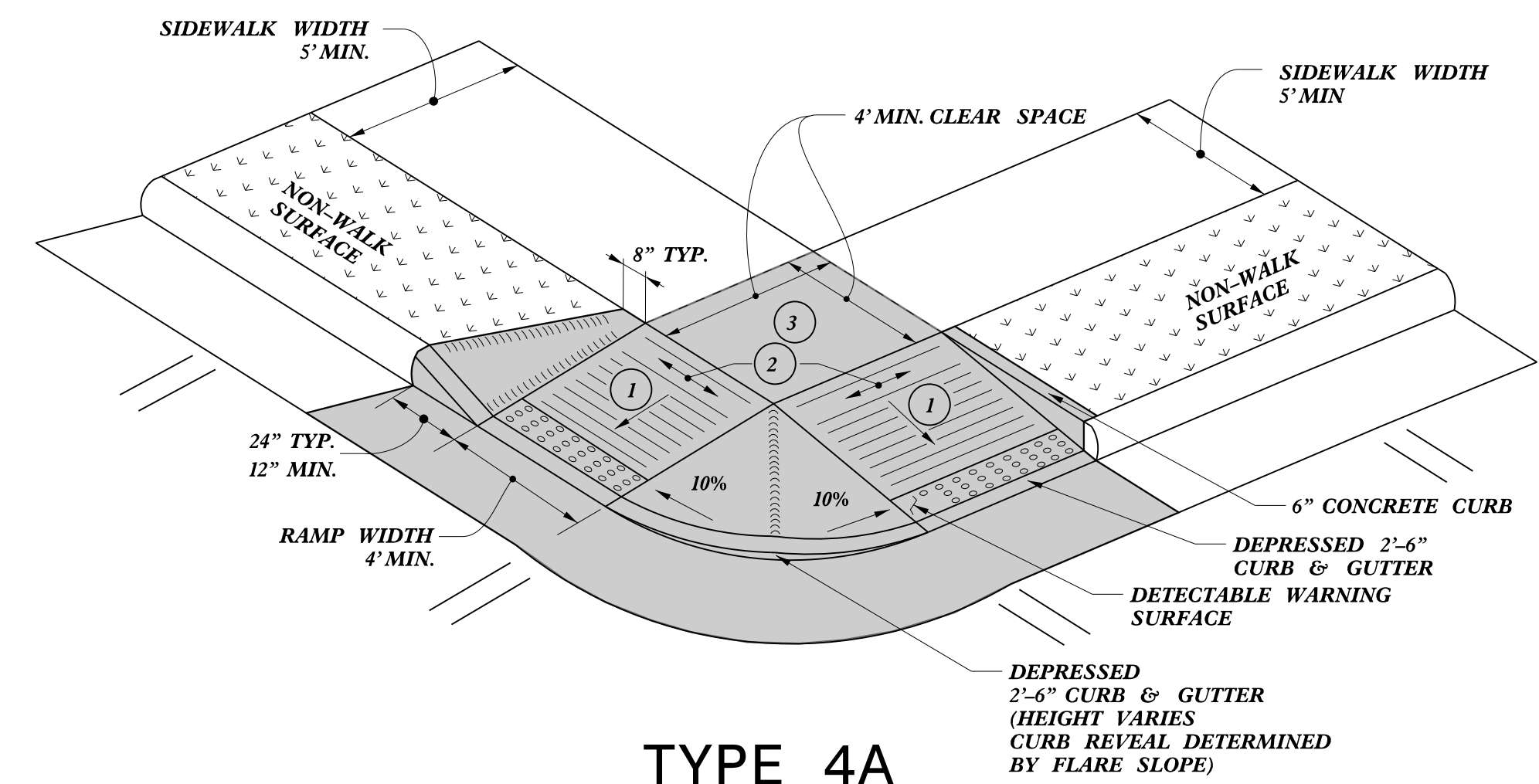
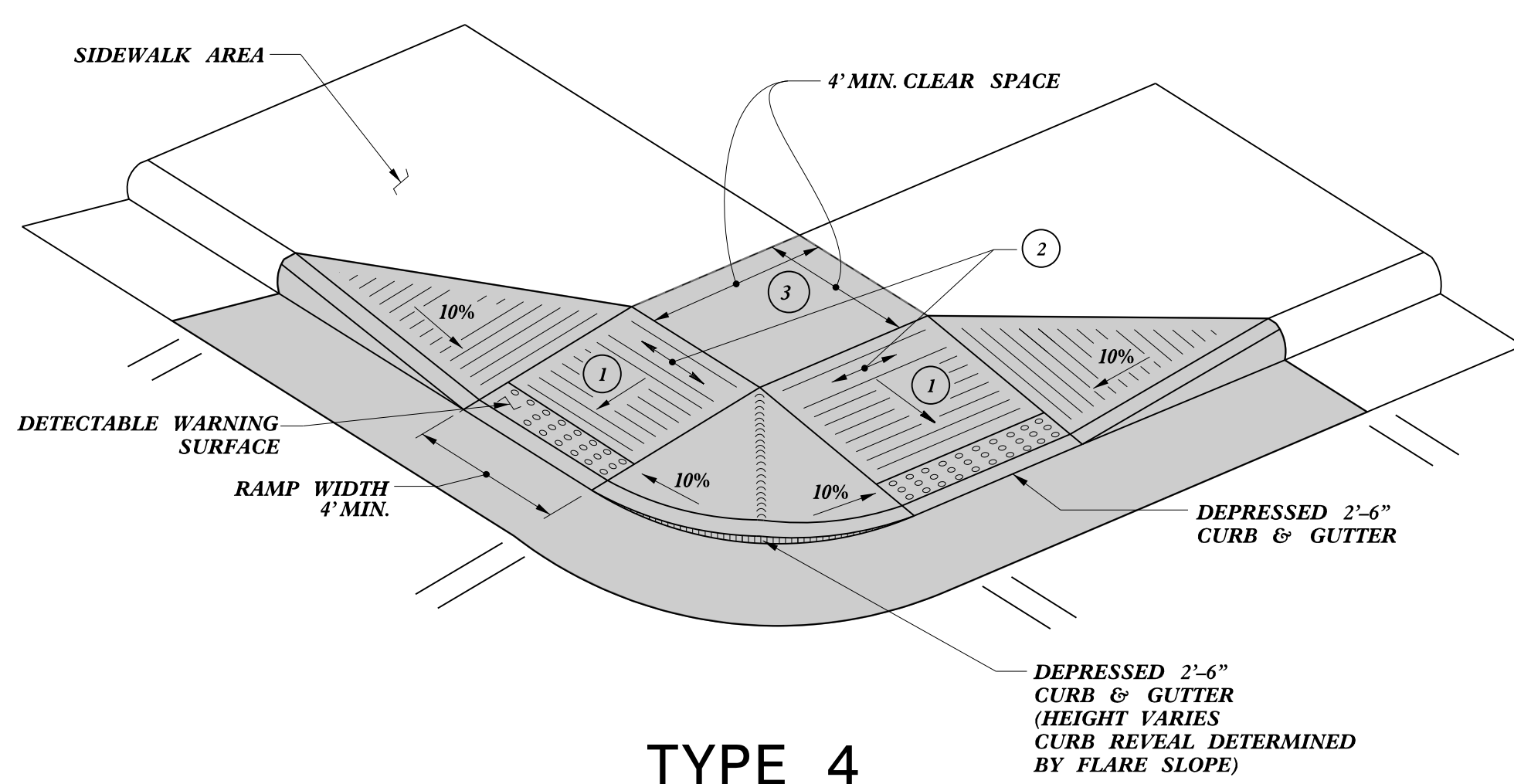
Signed by:  
*Nicole M. Hackler*  
5884320341640CS...  
10/6/2025

DOCUMENT NOT CONSIDERED FINAL  
UNLESS ALL SIGNATURES COMPLETED

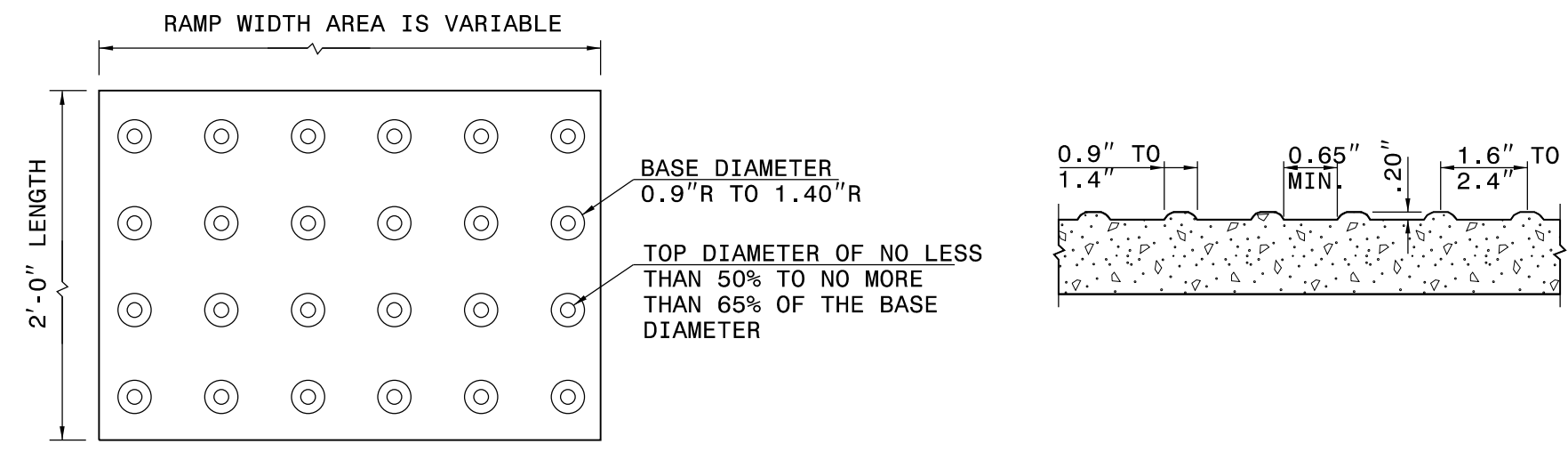
**CONTRACTS STANDARDS  
AND DEVELOPMENT UNIT**  
Office 919-707-6950 FAX 919-250-4119

**SEE TITLE BLOCK**

ORIGINAL BY: S.CALHOUN DATE: 12-22-2023  
 MODIFIED BY: DATE: \_\_\_\_\_  
 CHECKED BY: DATE: \_\_\_\_\_  
 FILE SPEC.: special\_details\nmhackler\0609.dgn



NOTES:  
 DETECTABLE WARNING SURFACE SHALL COVER 2'-0" LENGTH AND FULL WIDTH OF THE RAMP FLOOR AS SHOWN ON THE DETAILS.  
 DETECTABLE WARNING SURFACE SHALL CONTRAST VISIBLY WITH ADJOINING SURFACE, EITHER LIGHT-ON-DARK, OR DARK-ON-LIGHT SEQUENCE COVERING THE ENTIRE RAMP.



- 1 8.33% (12:1) MAX RAMP SLOPE
- 2 CROSS SLOPE: 2.00%
- 3 MAXIMUM CROSS SLOPE AND LONGITUDINAL SLOPE OF 2.00%

PAY LIMITS FOR 1 OR 2 CURB RAMPS (CALCULATE BASED ON NUMBER OF SETS OF DETECTABLE WARNING SURFACES)

**DETECTABLE WARNING SURFACE**

STATE OF NORTH CAROLINA  
 DEPT. OF TRANSPORTATION  
 DIVISION OF HIGHWAYS  
 RALEIGH, N.C.

ROADWAY STANDARD DRAWING FOR  
**CURB RAMP**  
 SHARED LANDING

SHEET 10 OF 13  
**848D06**

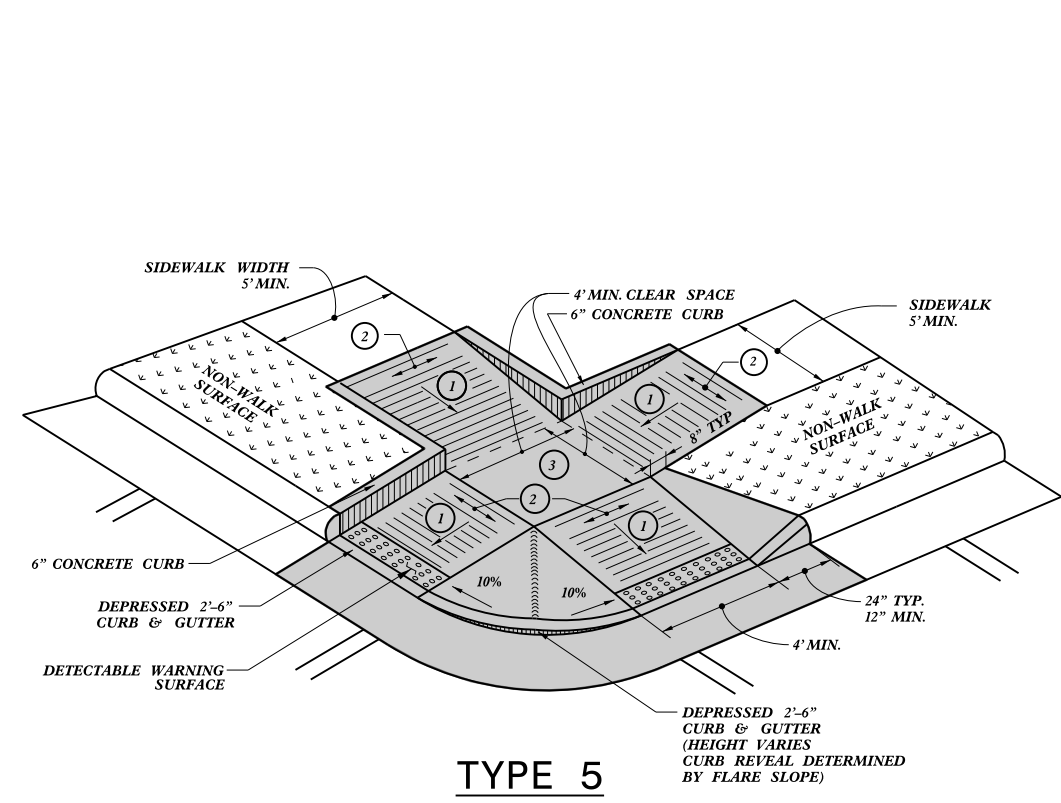


DOCUMENT NOT CONSIDERED FINAL  
 UNLESS ALL SIGNATURES COMPLETED

**CONTRACTS STANDARDS AND DEVELOPMENT UNIT**  
 Office 919-707-6950 FAX 919-250-4119

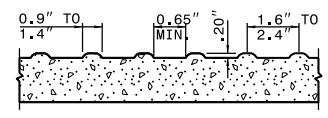
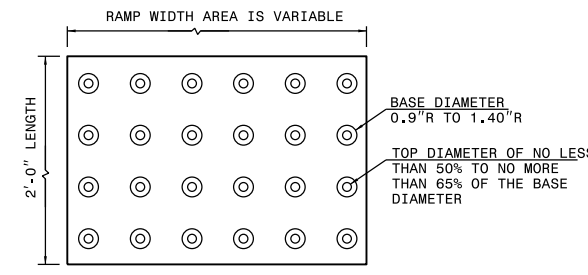
**SEE TITLE BLOCK**

ORIGINAL BY: S.CALHOUN DATE: 12-22-2023  
 MODIFIED BY: DATE:  
 CHECKED BY: DATE:  
 FILE SPEC.: special\_details\nmhacker\848D0610.dgn

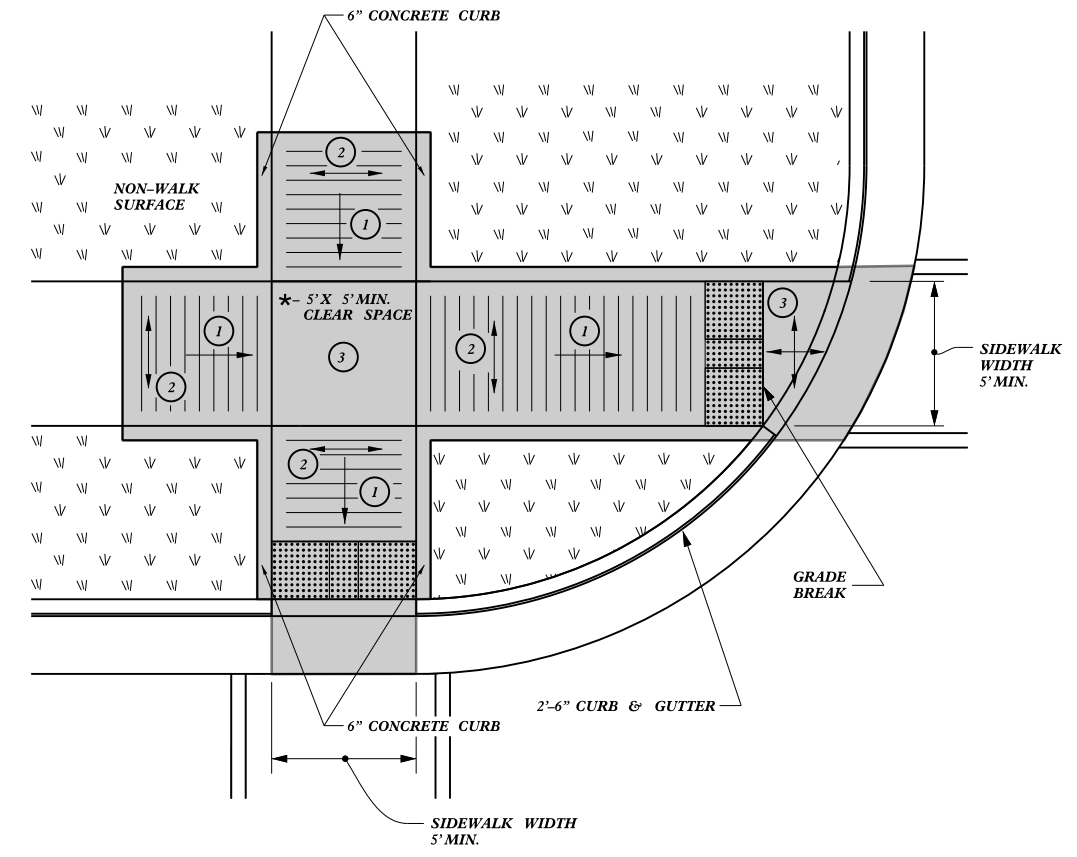


**TYPE 5**

NOTES:  
 DETECTABLE WARNING SURFACE SHALL COVER 2'-0" LENGTH AND FULL WIDTH OF THE RAMP FLOOR AS SHOWN ON THE DETAILS.  
 DETECTABLE WARNING SURFACE SHALL CONTRAST VISIBLY WITH ADJOINING SURFACE, EITHER LIGHT-ON-DARK, OR DARK-ON-LIGHT SEQUENCE COVERING THE ENTIRE RAMP.



**DETECTABLE WARNING SURFACE**



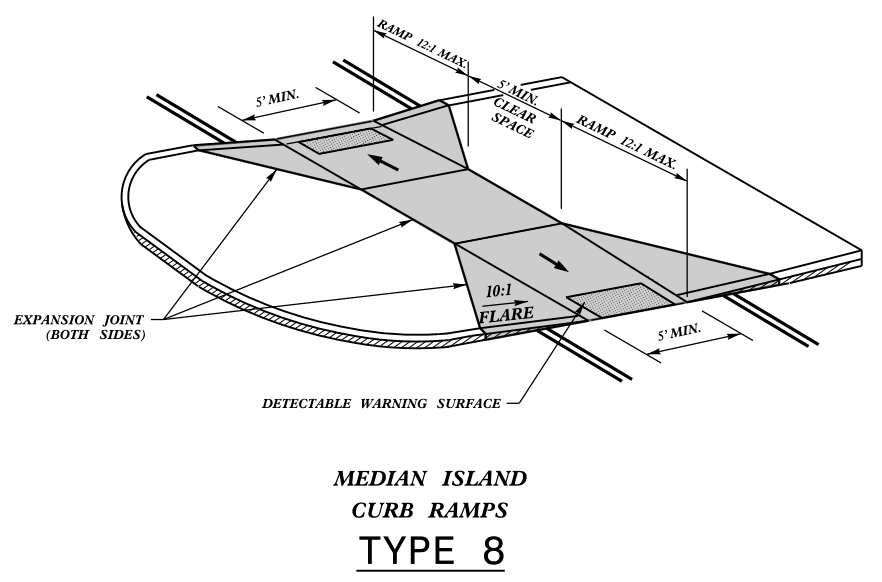
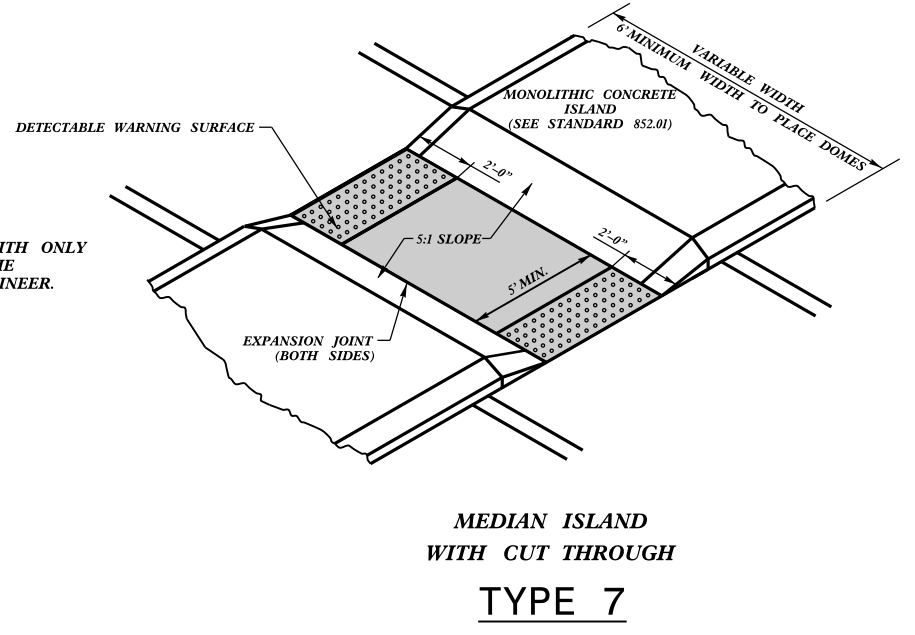
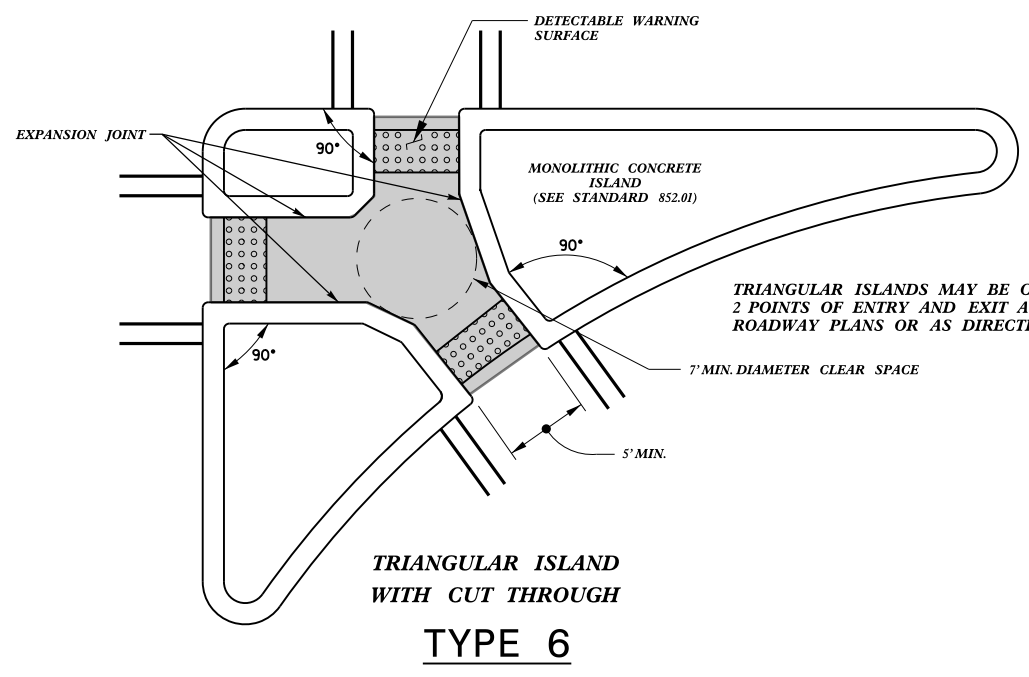
**TYPE 5A**


\* - WHERE CLEAR SPACE IS CONSTRAINED ON TWO OR MORE SIDES, THE CLEAR SPACE SHALL BE 4' MINIMUM X 5' MINIMUM, WITH 5' PROVIDED IN THE DIRECTION OF THE PEDESTRIAN STREET CROSSING.

- ① 8.33% (12:1) MAX RAMP SLOPE
- ② CROSS SLOPE: 2.00%
- ③ MAXIMUM CROSS SLOPE AND LONGITUDINAL SLOPE OF 2.00%

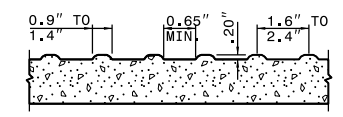
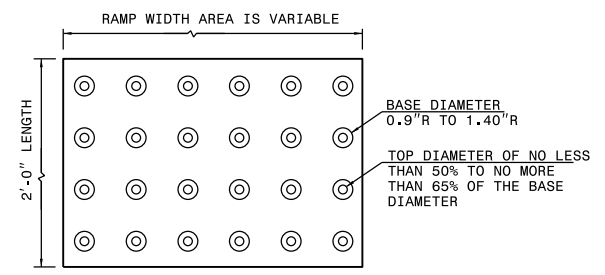
■ PAY LIMITS FOR 1 OR 2 CURB RAMPS (CALCULATE BASED ON NUMBER OF SETS OF DETECTABLE WARNING SURFACES)

1-24 STATE OF NORTH CAROLINA DEPT. OF TRANSPORTATION DIVISION OF HIGHWAYS RALEIGH, N.C.  
 ROADWAY STANDARD DRAWING FOR CURB RAMP SHARED LANDING  
 SHEET 11 OF 13  
**848.06**



 PAY LIMITS FOR 2 OR 3 CURB RAMPS  
(CALCULATE BASED ON NUMBER OF SETS OF DETECTABLE WARNING SURFACES)

**NOTES:**  
 1. DETECTABLE WARNING SURFACE SHALL COVER 2'-0" LENGTH AND FULL WIDTH OF THE RAMP FLOOR AS SHOWN ON THE DETAILS.  
 2. DETECTABLE WARNING SURFACE SHALL CONTRAST VISIBLY WITH ADJOINING SURFACE, EITHER LIGHT-ON-DARK, OR DARK-ON-LIGHT SEQUENCE COVERING THE ENTIRE RAMP.



**DETECTABLE WARNING SURFACE**

1-24 STATE OF NORTH CAROLINA DEPT. OF TRANSPORTATION DIVISION OF HIGHWAYS RALEIGH, N.C.  
 ROADWAY STANDARD DRAWING FOR CURB RAMP ISLAND RAMP  
 SHEET 12 OF 13  
**848.06**

NOTES:

1. CONSTRUCT THE RAMP SURFACE TO BE STABLE, FIRM, AND SLIP RESISTANT. CONSTRUCT THE CURB RAMP TYPE AS SHOWN IN THE PAVEMENT MARKING PLANS OR AS DIRECTED BY THE ENGINEER.
2. LOCATE CURB RAMPS AND PLACE PEDESTRIAN CROSSWALK MARKINGS AS SHOWN IN THE PAVEMENT MARKING PLANS. WHEN FIELD ADJUSTMENTS REQUIRE MOVING CURB RAMPS OR MARKINGS AS SHOWN, CONTACT THE SIGNING AND DELINEATION UNIT OR LOCATE AS DIRECTED BY THE ENGINEER.
3. COORDINATE THE CURB RAMP AND THE PEDESTRIAN CROSSWALK MARKINGS SO A 4'x4' CLEAR SPACE AT THE BASE OF THE CURB RAMP WILL FALL WITHIN THE PEDESTRIAN CROSSWALK LINES.
4. SET BACK DISTANCE FROM INSIDE CROSSWALK MARKING TO NEAREST EDGE OF TRAVEL LANE IS 4' MINIMUM.
5. REFER TO THE PAVEMENT MARKING PLANS FOR STOP BAR LOCATIONS AT SIGNALIZED INTERSECTIONS. IF A PAVEMENT MARKING PLAN IS NOT PROVIDED, CONTACT THE SIGNAL DESIGN SECTION FOR THE STOP BAR LOCATIONS OR LOCATE AS DIRECTED BY THE ENGINEER.
6. TERMINATE PARKING A MINIMUM OF 20' FROM THE BACK OF PEDESTRIAN CROSSWALK.
7. CONSTRUCT CURB RAMPS A MINIMUM OF 4' WIDE.
8. CONSTRUCT THE RUNNING SLOPE OF THE RAMP 8.33% MAXIMUM.
9. ALLOWABLE CROSS SLOPE ON SIDEWALKS AND CURB RAMPS WILL BE 2% MAXIMUM.
10. CONSTRUCT THE SIDE FLARE SLOPE A MAXIMUM OF 10% MEASURED ALONG THE CURB LINE.
11. CONSTRUCT THE COUNTER SLOPE OF THE GUTTER OR STREET AT THE BASE OF THE CURB RAMP A MAXIMUM OF 5% AND MAINTAIN A SMOOTH TRANSITION.
12. CONSTRUCT CLEAR SPACES FOR SIDEWALK A MINIMUM OF 4'x4' WITH A MAXIMUM SLOPE OF 2% IN ANY DIRECTION. CONSTRUCT CLEAR SPACES FOR MEDIAN ISLANDS A MINIMUM OF 5'x5' WITH A MAXIMUM SLOPE OF 2% IN ANY DIRECTION. IF CONSTRAINED ON TWO OR MORE SIDES, THE CLEAR SPACE SHALL BE 4' MINIMUM X 5' MINIMUM, WITH 5' PROVIDED IN THE DIRECTION OF THE PEDESTRIAN STREET CROSSING.
13. TO USE A MEDIAN ISLAND AS A PEDESTRIAN REFUGE AREA, MEDIAN ISLANDS WILL BE A MINIMUM OF 6' WIDE. CONSTRUCT MEDIAN ISLANDS TO PROVIDE PASSAGE OVER OR THROUGH THE ISLAND.
14. SMALL CHANNELIZATION ISLANDS THAT CAN NOT PROVIDE A 5'x5' CLEAR SPACE AT THE TOP OF RAMPS, WILL BE CUT THROUGH LEVEL WITH THE SURFACE STREET.
15. CURB RAMPS WITH RETURNED CURBS MAY BE USED ONLY WHERE PEDESTRIANS WOULD NOT NORMALLY WALK ACROSS THE RAMP, WHERE THE ADJACENT SURFACE IS PLANTING OR OTHER NON-WALKING SURFACE, OR THE SIDE APPROACH IS SUBSTANTIALLY OBSTRUCTED.
16. PLACE A 1/2" EXPANSION JOINT WHERE THE CONCRETE CURB RAMP JOINS THE CURB AS SHOWN IN ROADWAY STANDARD DRAWING 848.01.
17. PLACE ALL PEDESTRIAN PUSH BUTTON ACTUATORS AND CROSSING SIGNALS AS SHOWN IN THE PLANS OR AS SHOWN IN THE MUTCD.
18. DETECTABLE WARNING SURFACES WILL COVER 2'-0" LENGTH AND FULL WIDTH OF THE RAMP FLOOR AS SHOWN ON THE DETAILS.
19. DETECTABLE WARNING SURFACES WILL CONTRAST VISIBLY WITH ADJOINING SURFACE, EITHER LIGHT-ON-DARK, OR DARK-ON-LIGHT SEQUENCE COVERING THE ENTIRE RAMP.

1-24  
 STATE OF  
 NORTH CAROLINA  
 DEPT. OF TRANSPORTATION  
 DIVISION OF HIGHWAYS  
 RALEIGH, N.C.

ROADWAY STANDARD DRAWING FOR  
**CURB RAMP**  
 NOTES